

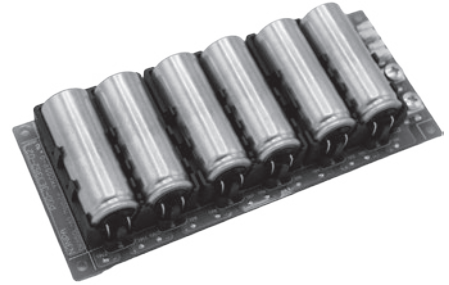
# DLCAP™ Module (Radial Lead type)



For an easy usage of Electric Double Layer Capacitor DLCAP™, we have prepared modules (Radial lead type).

● **Application Examples**

- Electricity assist for battery
- Momentary power supply at power failure
- Back up for power source failure



● **DLCAP™ Module**

◆ **FEATURES**

- Voltage balancing circuit installed
- Over voltage detection circuit installed
- Equipped with six Φ 18x50L (50F) DKA series cells with sleeve

◆ **SPECIFICATIONS**

Items	Specifications	
Operating Temperature	-40°C ~ +70°C	
Capacitance Tolerance	±10%, -15% (20°C)	
Temperature Characteristics	Capacitance Change	≦ ±30% of the measured value at 20°C
	Internal Resistance Change	≦ 600% of the internal resistance maximum value given in the ratings tables (-40°C)
Load Life Test	After the capacitors are subjected to the rated DC voltage at 70°C for 1000 hours, the following specifications shall be satisfied when they are restored to 20°C .	
	Capacitance Change	≦ ±30% of the initial measured value at 20°C
	Internal Resistance Change	≦ 200% of the internal resistance maximum value given in the ratings tables
	After the capacitors are subjected to the rated DC voltage at 60°C for 2000 hours, the following specifications shall be satisfied when they are restored to 20°C .	
Bias Humidity Test	After the capacitors are left at 60°C and 90 to 95%RH for 500 hours without voltage applied, the following specifications shall be satisfied when they are restored to 20°C .	
	Capacitance Change	≦ ±30% of the initial measured value at 20°C
	Internal Resistance Change	≦ 200% of the internal resistance maximum value given in the ratings tables

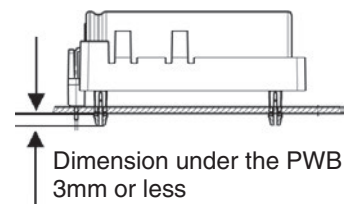
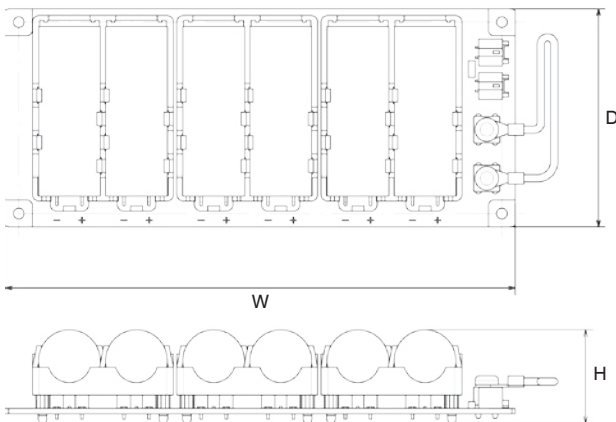
◆ **STANDARD RATINGS**

Rated Voltage [V]	Capacitance		Product Size			Internal Resistance		Weight*1 [kg]	Energy Storage*2 [Wh]	Part No.
	Typ. [F]	Min. [F]	W [mm]	D [mm]	H [mm]	Typ. [mΩ]	Max. [mΩ]			
15	8.3	7.1	152	65	28	74.2	87.4	0.2	0.26	MDKA150S8R3PE6111A

\* 1 Reference data

\* 2 Energy Storage (Wh) is calculated based on 「電気及び電子機器用電気二重層キャパシタの輸送に関する手引書」 (Japanese only) by JEITA.

◆ **DIMENSIONS**



◆ **Screw Specification**

Screw : M4  
Tightning torque : 1.5Nm±10%

● **Series and or parallels connection of DLCAP™ Module**

This module can be connected and used in series and parallel if necessary. If you need to connect more than 5 pieces in series please consult us.

● **DLCAP™ Custom Module Acceptable**

Customized designs for system integration are available upon request.

Please consult us for other special specifications.