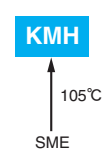


KMH Series

- Endurance with ripple current : 2,000 hours at 105°C
- RoHS2 Compliant

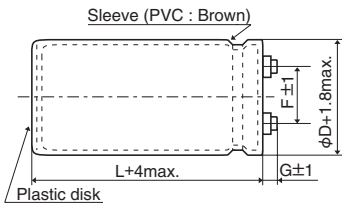


SPECIFICATIONS

| Items | Characteristics | | | | | | |
|---------------------------------|---|--------------------|-----------------------------|--------------|---------------------------------------|-----------------|-------------------------------|
| Category | -40 to +105°C (10 to 100V _{dc}) -25 to +105°C (160 to 400V _{dc}) | | | | | | |
| Temperature Range | | | | | | | |
| Rated Voltage Range | 10 to 400V _{dc} | | | | | | |
| Capacitance Tolerance | ±20% (M) (at 20°C, 120Hz) | | | | | | |
| Leakage Current | I=0.02CV or 5mA, whichever is smaller. Where, I : Max. leakage current (μA), C : Nominal capacitance (μF), V : Rated voltage (V) (at 20°C after 5 minutes) | | | | | | |
| Dissipation Factor (tan δ) | Shall not exceed the values shown in the STANDARD RATINGS (at 20°C, 120Hz) | | | | | | |
| Low Temperature Characteristics | Capacitance change 10 to 100V _{dc} : C(-40°C)/C(+20°C) ≥ 0.6 160 to 400V _{dc} : C(-25°C)/C(+20°C) ≥ 0.7 (at 120Hz) | | | | | | |
| Insulation Resistance | When measured between the terminals that are connected to each other and to the mounting clamp on the insulating sleeve covering the case by using an insulation resistance meter of 500V _{dc} , the insulation resistance shall not be less than 100MΩ. | | | | | | |
| Insulation Withstanding Voltage | When a voltage of 2,000V _{ac} is applied for 1 minute between the terminals that are connected to each other and to the mounting clamp on the insulating sleeve covering the case, there shall not be electrical damage. | | | | | | |
| Endurance | The following specifications shall be satisfied when the capacitors are restored to 20°C after subjected to DC voltage with the rated ripple current is applied (the peak voltage shall not exceed the rated voltage) for 2,000 hours at 105°C. <table border="1"> <tr> <td>Capacitance change</td> <td>≤ ±20% of the initial value</td> </tr> <tr> <td>D.F. (tan δ)</td> <td>≤ 200% of the initial specified value</td> </tr> <tr> <td>Leakage current</td> <td>≤ The initial specified value</td> </tr> </table> | Capacitance change | ≤ ±20% of the initial value | D.F. (tan δ) | ≤ 200% of the initial specified value | Leakage current | ≤ The initial specified value |
| Capacitance change | ≤ ±20% of the initial value | | | | | | |
| D.F. (tan δ) | ≤ 200% of the initial specified value | | | | | | |
| Leakage current | ≤ The initial specified value | | | | | | |
| Shelf Life | The following specifications shall be satisfied when the capacitors are restored to 20°C after exposing them for 500 hours at 105°C without voltage applied. Before the measurement, the capacitor shall be preconditioned by applying voltage according to Item 4.1 of JIS C 5101-4. <table border="1"> <tr> <td>Capacitance change</td> <td>≤ ±20% of the initial value</td> </tr> <tr> <td>D.F. (tan δ)</td> <td>≤ 200% of the initial specified value</td> </tr> <tr> <td>Leakage current</td> <td>≤ The initial specified value</td> </tr> </table> | Capacitance change | ≤ ±20% of the initial value | D.F. (tan δ) | ≤ 200% of the initial specified value | Leakage current | ≤ The initial specified value |
| Capacitance change | ≤ ±20% of the initial value | | | | | | |
| D.F. (tan δ) | ≤ 200% of the initial specified value | | | | | | |
| Leakage current | ≤ The initial specified value | | | | | | |

DIMENSIONS (Screw-Mount) [mm]

Terminal Code : LG



φ35 to φ63.5 : G=6
φ76.2 & φ89 : G=5

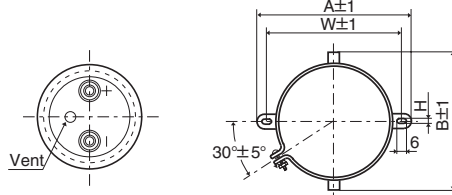
<Screw specifications>

Plus hexagon-headed screw : M5×0.8×10

Maximum screw tightening torque : 3.23Nm

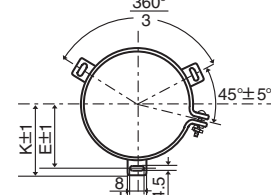
* The screw and the mounting clamp are separately supplied and not attached to the product.

Mounting Clamp Code : B



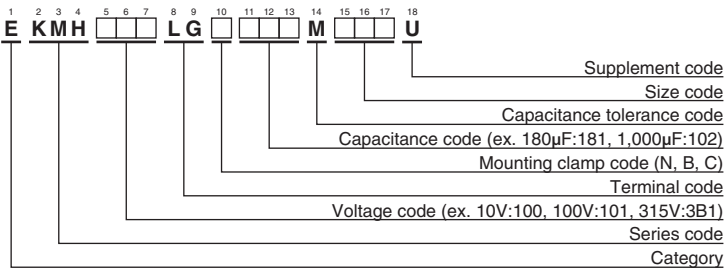
| φD | A | B | W | H | F |
|------|-------|------|------|-----|------|
| 35 | 58.0 | 44.0 | 48.0 | 3.5 | 12.7 |
| 50 | 78.0 | 64.0 | 68.0 | 4.5 | 22.4 |
| 63.5 | 90.0 | 76.0 | 80.0 | 4.5 | 28.0 |
| 76.2 | 104.5 | 90.0 | 93.5 | 4.5 | 31.5 |

Mounting Clamp Code : C



| φD | E | K | J | F |
|------|------|------|------|------|
| 50 | 32.5 | 37.0 | 14.0 | 22.4 |
| 63.5 | 38.1 | 43.5 | 14.0 | 28.0 |
| 76.2 | 44.5 | 50.0 | 14.0 | 31.5 |
| 89 | 50.8 | 56.5 | 16.0 | 31.5 |

PART NUMBERING SYSTEM



Please refer to "Product code guide (screw-mount terminal type)"

◆ STANDARD RATINGS

| WV (V _{dc}) | Cap (μF) | Case size φD×L(mm) | tan δ | Rated ripple current (Arms/105°C, 120Hz) | Part No. | WV (V _{dc}) | Cap (μF) | Case size φD×L(mm) | tan δ | Rated ripple current (Arms/105°C, 120Hz) | Part No. | |
|-----------------------|------------|--------------------|-------|--|-------------------|-----------------------|------------|--------------------|---------|--|-------------------|-------------------|
| 10 | 27,000 | 35 × 50 | 0.45 | 4.90 | EKM100LGB273MA50U | 35 | 56,000 | 50 × 100 | 0.40 | 11.4 | EKM350LGC563MA0U | |
| | 33,000 | 35 × 50 | 0.50 | 5.10 | EKM100LGB333MA50U | | 68,000 | 50 × 120 | 0.40 | 13.6 | EKM350LGC683MCC0U | |
| | 39,000 | 35 × 60 | 0.50 | 5.90 | EKM100LGB393MA60U | | 82,000 | 63.5 × 100 | 0.45 | 14.8 | EKM350LGC823MDA0U | |
| | 47,000 | 35 × 80 | 0.50 | 7.10 | EKM100LGB473MA80U | | 100,000 | 63.5 × 120 | 0.45 | 17.6 | EKM350LGC104MDC0U | |
| | 56,000 | 35 × 80 | 0.60 | 7.10 | EKM100LGB563MA80U | | 120,000 | 63.5 × 120 | 0.55 | 17.6 | EKM350LGC124MDC0U | |
| | 68,000 | 35 × 100 | 0.60 | 8.50 | EKM100LGB683MAA0U | | 150,000 | 76.2 × 120 | 0.65 | 19.8 | EKM350LGC154MEC0U | |
| | 82,000 | 35 × 100 | 0.65 | 8.90 | EKM100LGB823MAA0U | | 180,000 | 76.2 × 120 | 0.80 | 19.8 | EKM350LGC184MEC0U | |
| | 100,000 | 35 × 120 | 0.65 | 10.7 | EKM100LGB104MAC0U | | 220,000 | 76.2 × 140 | 0.80 | 23.4 | EKM350LGC224MEE0U | |
| | 120,000 | 50 × 80 | 0.75 | 11.0 | EKM100LGC124MC80U | | 270,000 | 89 × 140 | 1.00 | 25.5 | EKM350LGC274MFE0U | |
| | 150,000 | 50 × 100 | 0.80 | 13.2 | EKM100LGC154MCA0U | | 50 | 3,900 | 35 × 50 | 0.20 | 2.80 | EKM500LGB392MA50U |
| | 180,000 | 50 × 120 | 0.80 | 15.7 | EKM100LGC184MCC0U | | | 4,700 | 35 × 50 | 0.20 | 3.10 | EKM500LGB473MA50U |
| | 220,000 | 50 × 120 | 0.85 | 16.8 | EKM100LGC224MCC0U | | | 5,600 | 35 × 50 | 0.20 | 3.30 | EKM500LGB562MA50U |
| | 270,000 | 63.5 × 120 | 1.00 | 19.6 | EKM100LGC274MDC0U | | | 6,800 | 35 × 50 | 0.25 | 3.30 | EKM500LGB682MA50U |
| | 330,000 | 63.5 × 120 | 1.20 | 19.7 | EKM100LGC334MDC0U | | | 8,200 | 35 × 60 | 0.25 | 3.80 | EKM500LGB822MA60U |
| | 390,000 | 76.2 × 120 | 1.50 | 21.3 | EKM100LGC394MCC0U | | | 10,000 | 35 × 80 | 0.25 | 4.60 | EKM500LGB103MA80U |
| | 470,000 | 76.2 × 120 | 1.80 | 21.4 | EKM100LGC474MEC0U | | | 12,000 | 35 × 80 | 0.25 | 5.10 | EKM500LGB123MA80U |
| 560,000 | 76.2 × 140 | 2.00 | 23.6 | EKM100LGC564MEE0U | 15,000 | 35 × 80 | | 0.25 | 5.70 | EKM500LGB153MA80U | | |
| 680,000 | 89 × 140 | 2.40 | 26.0 | EKM100LGC684MFE0U | 18,000 | 35 × 100 | | 0.25 | 6.70 | EKM500LGB183MAA0U | | |
| 16 | 18,000 | 35 × 50 | 0.40 | 4.20 | EKM160LGB183MA50U | 22,000 | | 35 × 120 | 0.25 | 8.10 | EKM500LGB223MCC0U | |
| | 22,000 | 35 × 50 | 0.40 | 4.70 | EKM160LGB223MA50U | 27,000 | | 50 × 80 | 0.25 | 9.10 | EKM500LGC273MC80U | |
| | 27,000 | 35 × 60 | 0.40 | 5.50 | EKM160LGB273MA60U | 33,000 | | 50 × 100 | 0.25 | 11.1 | EKM500LGC333MCA0U | |
| | 33,000 | 35 × 60 | 0.45 | 5.70 | EKM160LGB333MA60U | 39,000 | | 50 × 120 | 0.25 | 13.1 | EKM500LGC393MCC0U | |
| | 39,000 | 35 × 80 | 0.45 | 6.80 | EKM160LGB393MA80U | 47,000 | | 50 × 120 | 0.30 | 13.9 | EKM500LGC473MCC0U | |
| | 47,000 | 35 × 80 | 0.50 | 7.10 | EKM160LGB473MA80U | 56,000 | | 63.5 × 100 | 0.35 | 13.9 | EKM500LGC563MDA0U | |
| | 56,000 | 35 × 100 | 0.50 | 8.40 | EKM160LGB563MAA0U | 68,000 | | 63.5 × 120 | 0.35 | 16.6 | EKM500LGC683MDC0U | |
| | 68,000 | 35 × 100 | 0.55 | 8.80 | EKM160LGB683MAA0U | 82,000 | 76.2 × 120 | 0.40 | 18.9 | EKM500LGC823MEC0U | | |
| | 82,000 | 50 × 80 | 0.55 | 10.7 | EKM160LGC823MC80U | 100,000 | 76.2 × 120 | 0.45 | 19.5 | EKM500LGC104MEC0U | | |
| | 100,000 | 50 × 80 | 0.65 | 10.8 | EKM160LGC104MC80U | 120,000 | 76.2 × 120 | 0.55 | 19.5 | EKM500LGC124MEC0U | | |
| | 120,000 | 50 × 100 | 0.65 | 13.1 | EKM160LGC124MCA0U | 150,000 | 89 × 140 | 0.60 | 23.9 | EKM500LGC154MFE0U | | |
| | 150,000 | 50 × 120 | 0.70 | 15.3 | EKM160LGC154MCC0U | 180,000 | 89 × 140 | 0.75 | 23.9 | EKM500LGC184MFE0U | | |
| | 180,000 | 50 × 120 | 0.80 | 15.7 | EKM160LGC184MCC0U | 63 | 2,700 | 35 × 50 | 0.20 | 2.30 | EKM630LGB272MA50U | |
| | 220,000 | 63.5 × 120 | 0.85 | 19.2 | EKM160LGC224MDC0U | | 3,300 | 35 × 50 | 0.20 | 2.50 | EKM630LGB332MA50U | |
| | 270,000 | 63.5 × 120 | 1.00 | 19.6 | EKM160LGC274MDC0U | | 3,900 | 35 × 50 | 0.20 | 2.80 | EKM630LGB392MA50U | |
| | 330,000 | 76.2 × 120 | 1.30 | 21.1 | EKM160LGC334MEC0U | | 4,700 | 35 × 50 | 0.20 | 3.10 | EKM630LGB472MA50U | |
| 390,000 | 76.2 × 120 | 1.50 | 21.3 | EKM160LGC394MCC0U | 5,600 | | 35 × 60 | 0.20 | 3.50 | EKM630LGB562MA60U | | |
| 470,000 | 76.2 × 140 | 1.60 | 24.2 | EKM160LGC474MEE0U | 6,800 | | 35 × 60 | 0.20 | 3.90 | EKM630LGB682MA60U | | |
| 560,000 | 89 × 140 | 2.00 | 28.1 | EKM160LGC564MFE0U | 8,200 | | 35 × 80 | 0.20 | 4.70 | EKM630LGB822MA80U | | |
| 680,000 | 89 × 140 | 2.40 | 28.5 | EKM160LGC684MFE0U | 10,000 | | 35 × 80 | 0.25 | 4.70 | EKM630LGB103MA80U | | |
| 25 | 12,000 | 35 × 50 | 0.35 | 3.70 | EKM250LGB123MA50U | | 12,000 | 35 × 100 | 0.25 | 5.50 | EKM630LGB123MAA0U | |
| | 15,000 | 35 × 50 | 0.35 | 4.10 | EKM250LGB153MA50U | | 15,000 | 35 × 120 | 0.25 | 6.60 | EKM630LGB153MAC0U | |
| | 18,000 | 35 × 60 | 0.35 | 4.80 | EKM250LGB183MA60U | | 18,000 | 50 × 80 | 0.25 | 7.40 | EKM630LGC183MC80U | |
| | 22,000 | 35 × 60 | 0.35 | 5.30 | EKM250LGB223MA60U | | 22,000 | 50 × 100 | 0.25 | 9.00 | EKM630LGC223MCA0U | |
| | 27,000 | 35 × 80 | 0.35 | 6.40 | EKM250LGB273MA80U | | 27,000 | 50 × 120 | 0.25 | 10.9 | EKM630LGC273MCC0U | |
| | 33,000 | 35 × 80 | 0.40 | 6.70 | EKM250LGB333MA80U | | 33,000 | 50 × 120 | 0.25 | 12.0 | EKM630LGC333MCC0U | |
| | 39,000 | 35 × 100 | 0.40 | 7.80 | EKM250LGB393MAA0U | | 39,000 | 63.5 × 100 | 0.30 | 12.5 | EKM630LGC393MDA0U | |
| | 47,000 | 35 × 120 | 0.40 | 9.30 | EKM250LGB473MAC0U | | 47,000 | 63.5 × 120 | 0.30 | 14.9 | EKM630LGC473MDC0U | |
| | 56,000 | 50 × 80 | 0.45 | 9.70 | EKM250LGC563MCC0U | 56,000 | 63.5 × 120 | 0.30 | 16.3 | EKM630LGC563MDC0U | | |
| | 68,000 | 50 × 100 | 0.45 | 11.2 | EKM250LGC683MCA0U | 68,000 | 76.2 × 120 | 0.35 | 18.4 | EKM630LGC683MEC0U | | |
| | 82,000 | 50 × 100 | 0.50 | 11.2 | EKM250LGC823MCA0U | 82,000 | 76.2 × 140 | 0.40 | 20.0 | EKM630LGC823MEE0U | | |
| | 100,000 | 50 × 120 | 0.50 | 14.8 | EKM250LGC104MCC0U | 100,000 | 76.2 × 140 | 0.50 | 20.0 | EKM630LGC104MEE0U | | |
| | 120,000 | 63.5 × 100 | 0.65 | 14.9 | EKM250LGC124MDA0U | 120,000 | 89 × 140 | 0.60 | 21.8 | EKM630LGC124MFE0U | | |
| | 150,000 | 63.5 × 120 | 0.65 | 17.9 | EKM250LGC154MDC0U | 80 | 2,200 | 35 × 50 | 0.15 | 2.40 | EKM800LGB272MA50U | |
| | 180,000 | 63.5 × 120 | 0.80 | 17.9 | EKM250LGC184MDC0U | | 2,700 | 35 × 50 | 0.15 | 2.70 | EKM800LGB272MA50U | |
| | 220,000 | 76.2 × 120 | 0.85 | 21.3 | EKM250LGC224MEC0U | | 3,300 | 35 × 50 | 0.15 | 3.00 | EKM800LGB332MA50U | |
| 270,000 | 76.2 × 120 | 1.00 | 21.7 | EKM250LGC274MEC0U | 3,900 | | 35 × 60 | 0.15 | 3.40 | EKM800LGB392MA60U | | |
| 330,000 | 76.2 × 140 | 1.20 | 23.4 | EKM250LGC334MEE0U | 4,700 | | 35 × 60 | 0.15 | 3.70 | EKM800LGB472MA60U | | |
| 390,000 | 89 × 140 | 1.50 | 24.9 | EKM250LGC394MFE0U | 5,600 | | 35 × 80 | 0.15 | 4.50 | EKM800LGB562MA80U | | |
| 35 | 8,200 | 35 × 50 | 0.30 | 3.30 | EKM350LGB822MA50U | | 6,800 | 35 × 80 | 0.15 | 4.90 | EKM800LGB682MA80U | |
| | 10,000 | 35 × 50 | 0.30 | 3.60 | EKM350LGB103MA50U | | 8,200 | 35 × 100 | 0.20 | 5.10 | EKM800LGB822MAA0U | |
| | 12,000 | 35 × 60 | 0.30 | 4.20 | EKM350LGB123MA60U | | 10,000 | 35 × 120 | 0.20 | 6.10 | EKM800LGB103MAC0U | |
| | 15,000 | 35 × 60 | 0.30 | 4.70 | EKM350LGB153MA60U | | 12,000 | 50 × 80 | 0.20 | 6.70 | EKM800LGC123MC80U | |
| | 18,000 | 35 × 80 | 0.30 | 5.70 | EKM350LGB183MA80U | | 15,000 | 50 × 100 | 0.20 | 8.30 | EKM800LGC153MCA0U | |
| | 22,000 | 35 × 80 | 0.30 | 6.30 | EKM350LGB223MA80U | | 18,000 | 50 × 120 | 0.20 | 9.90 | EKM800LGC183MCC0U | |
| | 27,000 | 35 × 100 | 0.30 | 7.50 | EKM350LGB273MAA0U | | 22,000 | 50 × 120 | 0.20 | 11.0 | EKM800LGC223MCC0U | |
| | 33,000 | 35 × 120 | 0.30 | 9.00 | EKM350LGB333MAC0U | | 27,000 | 63.5 × 100 | 0.25 | 11.4 | EKM800LGC273MDA0U | |
| | 39,000 | 50 × 80 | 0.35 | 9.20 | EKM350LGC393MC80U | | 33,000 | 76.2 × 100 | 0.25 | 13.9 | EKM800LGC333MEA0U | |
| | 47,000 | 50 × 100 | 0.35 | 11.2 | EKM350LGC473MCA0U | | 39,000 | 76.2 × 100 | 0.30 | 13.9 | EKM800LGC393MEA0U | |

◆ STANDARD RATINGS

| WV (V _{dc}) | Cap (μF) | Case size φD×L(mm) | tan δ | Rated ripple current (Arms/105°C, 120Hz) | Part No. | WV (V _{dc}) | Cap (μF) | Case size φD×L(mm) | tan δ | Rated ripple current (Arms/105°C, 120Hz) | Part No. |
|-----------------------|------------|--------------------|-------|--|-------------------|-----------------------|------------|--------------------|-------------------|--|-------------------|
| 80 | 47,000 | 76.2 × 120 | 0.30 | 16.5 | EKM800LGC473MEC0U | 250 | 330 | 35 × 50 | 0.15 | 0.90 | EKM251LGB331MA50U |
| | 56,000 | 76.2 × 120 | 0.30 | 18.1 | EKM800LGC563MEC0U | | 390 | 35 × 50 | 0.15 | 1.00 | EKM251LGB391MA50U |
| | 68,000 | 76.2 × 140 | 0.35 | 19.7 | EKM800LGC683MEE0U | | 470 | 35 × 50 | 0.15 | 1.10 | EKM251LGB471MA50U |
| | 82,000 | 89 × 140 | 0.40 | 22.1 | EKM800LGC823MFE0U | | 560 | 35 × 50 | 0.15 | 1.20 | EKM251LGB561MA50U |
| 100 | 1,800 | 35 × 50 | 0.10 | 2.70 | EKM101LGB182MA50U | 680 | 35 × 60 | 0.15 | 1.40 | EKM251LGB681MA60U | |
| | 2,200 | 35 × 50 | 0.10 | 3.00 | EKM101LGB222MA50U | 820 | 35 × 80 | 0.15 | 1.60 | EKM251LGB821MA80U | |
| | 2,700 | 35 × 60 | 0.10 | 3.50 | EKM101LGB272MA60U | 1,000 | 35 × 80 | 0.20 | 1.60 | EKM251LGB102MA80U | |
| | 3,300 | 35 × 80 | 0.10 | 4.20 | EKM101LGB332MA80U | 1,200 | 35 × 80 | 0.20 | 1.80 | EKM251LGB122MA80U | |
| | 3,900 | 35 × 80 | 0.12 | 4.20 | EKM101LGB392MA80U | 1,500 | 35 × 100 | 0.20 | 2.10 | EKM251LGB152MAA0U | |
| | 4,700 | 35 × 100 | 0.12 | 5.00 | EKM101LGB472MAA0U | 1,800 | 35 × 120 | 0.20 | 2.50 | EKM251LGB182MAC0U | |
| | 5,600 | 35 × 100 | 0.12 | 5.40 | EKM101LGB562MAA0U | 2,200 | 50 × 80 | 0.20 | 2.90 | EKM251LGB102MA80U | |
| | 6,800 | 35 × 120 | 0.15 | 5.80 | EKM101LGB682MAC0U | 2,700 | 50 × 100 | 0.20 | 3.50 | EKM251LGC272MCA0U | |
| | 8,200 | 50 × 80 | 0.15 | 6.40 | EKM101LGC822MC80U | 3,300 | 50 × 120 | 0.20 | 4.20 | EKM251LGC332MCC0U | |
| | 10,000 | 50 × 100 | 0.15 | 7.80 | EKM101LGC103MCA0U | 3,900 | 50 × 120 | 0.20 | 4.60 | EKM251LGC392MCC0U | |
| | 12,000 | 50 × 120 | 0.15 | 9.30 | EKM101LGC123MCC0U | 10,000 | 63.5 × 120 | 0.20 | 5.70 | EKM251LGC103MEE0U | |
| | 15,000 | 50 × 120 | 0.15 | 10.4 | EKM101LGC153MCC0U | 5,600 | 63.5 × 120 | 0.20 | 6.30 | EKM251LGC562MDC0U | |
| | 18,000 | 63.5 × 100 | 0.20 | 10.4 | EKM101LGC183MDA0U | 6,800 | 76.2 × 120 | 0.20 | 7.70 | EKM251LGC682MEC0U | |
| | 22,000 | 63.5 × 120 | 0.20 | 12.5 | EKM101LGC223MDC0U | 8,200 | 76.2 × 120 | 0.20 | 8.40 | EKM251LGC822MEC0U | |
| | 27,000 | 76.2 × 120 | 0.25 | 13.7 | EKM101LGC273MEC0U | 10,000 | 76.2 × 140 | 0.20 | 10.0 | EKM251LGC103MEE0U | |
| | 33,000 | 76.2 × 120 | 0.25 | 15.2 | EKM101LGC333MEC0U | 12,000 | 89 × 140 | 0.20 | 11.9 | EKM251LGC123MFE0U | |
| 39,000 | 76.2 × 140 | 0.30 | 16.1 | EKM101LGC393MEE0U | 315 | 180 | 35 × 50 | 0.10 | 0.80 | EKM315LGB181MA50U | |
| 47,000 | 89 × 140 | 0.30 | 19.3 | EKM101LGC473MFE0U | | 220 | 35 × 50 | 0.10 | 0.90 | EKM315LGB221MA50U | |
| 56,000 | 89 × 140 | 0.30 | 21.1 | EKM101LGC563MFE0U | | 270 | 35 × 50 | 0.10 | 1.00 | EKM315LGB271MA50U | |
| 160 | 560 | 35 × 50 | 0.15 | 1.20 | | EKM161LGB561MA50U | 330 | 35 × 50 | 0.10 | 1.10 | EKM315LGB331MA50U |
| | 680 | 35 × 50 | 0.15 | 1.30 | | EKM161LGB681MA50U | 390 | 35 × 50 | 0.10 | 1.20 | EKM315LGB391MA50U |
| | 820 | 35 × 50 | 0.15 | 1.40 | | EKM161LGB821MA50U | 470 | 35 × 60 | 0.10 | 1.40 | EKM315LGB471MA60U |
| | 1,000 | 35 × 50 | 0.15 | 1.60 | | EKM161LGB102MA50U | 560 | 35 × 60 | 0.10 | 1.50 | EKM315LGB561MA60U |
| | 1,200 | 35 × 60 | 0.15 | 1.90 | | EKM161LGB122MA60U | 680 | 35 × 80 | 0.10 | 1.70 | EKM315LGB681MA80U |
| | 1,500 | 35 × 60 | 0.15 | 2.10 | | EKM161LGB152MA60U | 820 | 35 × 80 | 0.15 | 1.70 | EKM315LGB821MA80U |
| | 1,800 | 35 × 80 | 0.15 | 2.50 | | EKM161LGB182MA80U | 1,000 | 35 × 100 | 0.15 | 2.00 | EKM315LGB102MAA0U |
| | 2,200 | 35 × 80 | 0.15 | 2.80 | | EKM161LGB222MA80U | 1,200 | 35 × 120 | 0.15 | 2.40 | EKM315LGB122MAC0U |
| | 2,700 | 35 × 100 | 0.15 | 3.30 | | EKM161LGB272MAA0U | 1,500 | 50 × 80 | 0.15 | 2.70 | EKM315LGC152MC80U |
| | 3,300 | 35 × 120 | 0.15 | 3.80 | | EKM161LGB332MAC0U | 1,800 | 50 × 100 | 0.15 | 3.30 | EKM315LGC182MCA0U |
| | 3,900 | 50 × 80 | 0.20 | 3.80 | | EKM161LGC392MC80U | 2,200 | 50 × 120 | 0.15 | 4.00 | EKM315LGC222MCC0U |
| | 4,700 | 50 × 100 | 0.20 | 4.60 | | EKM161LGC472MCA0U | 2,700 | 50 × 120 | 0.15 | 4.40 | EKM315LGC272MCC0U |
| | 5,600 | 50 × 100 | 0.20 | 5.10 | | EKM161LGC562MCA0U | 3,300 | 63.5 × 100 | 0.15 | 5.10 | EKM315LGC332MDA0U |
| | 6,800 | 50 × 120 | 0.20 | 6.10 | EKM161LGC682MCC0U | 3,900 | 63.5 × 120 | 0.15 | 6.00 | EKM315LGC392MDC0U | |
| | 8,200 | 63.5 × 100 | 0.20 | 7.00 | EKM161LGC822MDA0U | 4,700 | 76.2 × 100 | 0.15 | 6.80 | EKM315LGC472MEA0U | |
| | 10,000 | 63.5 × 120 | 0.20 | 8.40 | EKM161LGC103MDC0U | 5,600 | 76.2 × 120 | 0.15 | 8.00 | EKM315LGC562MDC0U | |
| 12,000 | 76.2 × 100 | 0.20 | 9.40 | EKM161LGC123MEA0U | 6,800 | 76.2 × 130 | 0.15 | 9.20 | EKM315LGC682MED0U | | |
| 15,000 | 76.2 × 120 | 0.20 | 11.4 | EKM161LGC153MEC0U | 8,200 | 89 × 140 | 0.15 | 11.4 | EKM315LGC822MFE0U | | |
| 18,000 | 76.2 × 140 | 0.20 | 13.4 | EKM161LGC183MEE0U | 10,000 | 89 × 140 | 0.15 | 12.6 | EKM315LGC103MFE0U | | |
| 22,000 | 89 × 140 | 0.25 | 14.5 | EKM161LGC223MFE0U | 350 | 180 | 35 × 50 | 0.10 | 0.80 | EKM351LGB181MA50U | |
| 27,000 | 89 × 140 | 0.25 | 16.0 | EKM161LGC273MFE0U | | 220 | 35 × 50 | 0.10 | 0.90 | EKM351LGB221MA50U | |
| 200 | 330 | 35 × 50 | 0.15 | 0.90 | | EKM201LGB331MA50U | 270 | 35 × 50 | 0.10 | 1.00 | EKM351LGB271MA50U |
| | 390 | 35 × 50 | 0.15 | 1.00 | | EKM201LGB391MA50U | 330 | 35 × 50 | 0.10 | 1.10 | EKM351LGB331MA50U |
| | 470 | 35 × 50 | 0.15 | 1.10 | | EKM201LGB471MA50U | 390 | 35 × 60 | 0.10 | 1.30 | EKM351LGB391MA60U |
| | 560 | 35 × 50 | 0.15 | 1.20 | | EKM201LGB561MA50U | 470 | 35 × 60 | 0.10 | 1.40 | EKM351LGB471MA60U |
| | 680 | 35 × 50 | 0.15 | 1.30 | | EKM201LGB681MA50U | 560 | 35 × 80 | 0.10 | 1.60 | EKM351LGB561MA80U |
| | 820 | 35 × 50 | 0.15 | 1.40 | | EKM201LGB821MA50U | 680 | 35 × 80 | 0.15 | 1.60 | EKM351LGB681MA80U |
| | 1,000 | 35 × 60 | 0.15 | 1.70 | | EKM201LGB102MA60U | 820 | 35 × 100 | 0.15 | 1.80 | EKM351LGB821MAA0U |
| | 1,200 | 35 × 60 | 0.15 | 1.90 | | EKM201LGB122MA60U | 1,000 | 35 × 120 | 0.15 | 2.20 | EKM351LGB102MAC0U |
| | 1,500 | 35 × 80 | 0.15 | 2.30 | | EKM201LGB152MA80U | 1,200 | 50 × 80 | 0.15 | 2.40 | EKM351LGC122MC80U |
| | 1,800 | 35 × 80 | 0.15 | 2.50 | | EKM201LGB182MA80U | 1,500 | 50 × 100 | 0.15 | 3.00 | EKM351LGC152MCA0U |
| | 2,200 | 35 × 100 | 0.15 | 3.00 | | EKM201LGB222MAA0U | 1,800 | 50 × 120 | 0.15 | 3.60 | EKM351LGC182MCC0U |
| | 2,700 | 35 × 120 | 0.15 | 3.60 | | EKM201LGB272MAC0U | 2,200 | 50 × 120 | 0.15 | 4.00 | EKM351LGC222MCC0U |
| | 3,300 | 50 × 80 | 0.15 | 4.10 | | EKM201LGC332MC80U | 2,700 | 63.5 × 100 | 0.15 | 4.60 | EKM351LGC272MDA0U |
| | 3,900 | 50 × 100 | 0.15 | 4.90 | | EKM201LGC392MCA0U | 3,900 | 76.2 × 120 | 0.15 | 6.70 | EKM351LGC392MEC0U |
| | 4,700 | 63.5 × 100 | 0.20 | 5.30 | EKM201LGC472MDA0U | 5,600 | 76.2 × 130 | 0.15 | 8.30 | EKM351LGC562MED0U | |
| | 5,600 | 63.5 × 100 | 0.20 | 5.80 | EKM201LGC562MDA0U | 6,800 | 76.2 × 140 | 0.15 | 9.50 | EKM351LGC682MEE0U | |
| 6,800 | 63.5 × 120 | 0.20 | 6.90 | EKM201LGC682MDC0U | 8,200 | 89 × 140 | 0.15 | 11.4 | EKM351LGC822MFE0U | | |
| 8,200 | 63.5 × 120 | 0.20 | 7.60 | EKM201LGC822MDC0U | 400 | 180 | 35 × 50 | 0.10 | 0.80 | EKM401LGB181MA50U | |
| 10,000 | 76.2 × 120 | 0.20 | 9.30 | EKM201LGC103MEC0U | | 220 | 35 × 50 | 0.10 | 0.90 | EKM401LGB221MA50U | |
| 12,000 | 76.2 × 120 | 0.20 | 10.2 | EKM201LGC123MEC0U | | 270 | 35 × 50 | 0.10 | 1.00 | EKM401LGB271MA50U | |
| 15,000 | 76.2 × 140 | 0.20 | 12.2 | EKM201LGC153MEE0U | | 330 | 35 × 60 | 0.10 | 1.20 | EKM401LGB331MA60U | |
| 18,000 | 89 × 140 | 0.25 | 13.1 | EKM201LGC183MFE0U | | 390 | 35 × 60 | 0.10 | 1.30 | EKM401LGB391MA60U | |
| 250 | 270 | 35 × 50 | 0.15 | 0.80 | | EKM251LGB271MA50U | 470 | 35 × 80 | 0.10 | 1.40 | EKM401LGB471MA80U |

◆STANDARD RATINGS

| WV (V _{dc}) | Cap (μF) | Case size φD×L(mm) | tan δ | Rated ripple current (Arms/105°C, 120Hz) | Part No. | WV (V _{dc}) | Cap (μF) | Case size φD×L(mm) | tan δ | Rated ripple current (Arms/105°C, 120Hz) | Part No. |
|-----------------------|----------|--------------------|-------|--|-------------------|-----------------------|----------|--------------------|-------|--|-------------------|
| 400 | 560 | 35 × 80 | 0.15 | 1.40 | EKM401LGB561MA80U | 400 | 2,200 | 63.5 × 100 | 0.15 | 4.20 | EKM401LGC222MDA0U |
| | 680 | 35 × 100 | 0.15 | 1.70 | EKM401LGB681MAA0U | | 3,300 | 63.5 × 120 | 0.15 | 5.50 | EKM401LGC332MDC0U |
| | 820 | 35 × 120 | 0.15 | 2.00 | EKM401LGB821MAC0U | | 4,700 | 76.2 × 130 | 0.15 | 7.60 | EKM401LGC472MED0U |
| | 1,000 | 50 × 80 | 0.15 | 2.20 | EKM401LGC102MC80U | | 5,600 | 89 × 140 | 0.15 | 9.40 | EKM401LGC562MFE0U |
| | 1,200 | 50 × 100 | 0.15 | 2.70 | EKM401LGC122MCA0U | | 6,800 | 89 × 140 | 0.15 | 10.4 | EKM401LGC682MFE0U |
| | 1,500 | 50 × 120 | 0.15 | 3.30 | EKM401LGC152MCC0U | | | | | | |

◆RATED RIPPLE CURRENT MULTIPLIERS

●Frequency Multipliers

| Rated voltage (V _{dc}) | Case diameter (mm) | Frequency (Hz) | | | | | |
|----------------------------------|--------------------|----------------|------|------|------|------|------|
| | | 50 | 120 | 300 | 1k | 10k | 50k |
| 10 to 50 | φ35 to φ89 | 0.95 | 1.00 | 1.03 | 1.05 | 1.09 | 1.12 |
| 63 & 80 | φ35 | 0.90 | 1.00 | 1.06 | 1.10 | 1.18 | 1.22 |
| | φ50 to φ89 | 0.95 | 1.00 | 1.03 | 1.05 | 1.09 | 1.12 |
| 100 | φ35 | 0.82 | 1.00 | 1.12 | 1.22 | 1.30 | 1.33 |
| | φ50 | 0.90 | 1.00 | 1.06 | 1.10 | 1.18 | 1.22 |
| | φ63.5 to φ89 | 0.95 | 1.00 | 1.03 | 1.05 | 1.09 | 1.12 |
| 160 to 250 | φ35 | 0.80 | 1.00 | 1.19 | 1.34 | 1.46 | 1.52 |
| | φ50 & φ63.5 | 0.81 | 1.00 | 1.14 | 1.26 | 1.36 | 1.41 |
| | φ76.2 & φ89 | 0.82 | 1.00 | 1.12 | 1.22 | 1.30 | 1.33 |
| 315 to 400 | φ35 to φ89 | 0.80 | 1.00 | 1.19 | 1.34 | 1.46 | 1.52 |

The endurance of capacitors is reduced with internal heating produced by ripple current at the rate of halving the lifetime with every 5°C rise. When long life performance is required in actual use, the rms ripple current has to be reduced.