

Corporate Information / Stock Information (As of March 31, 2018)

Foundation	August 1931
Establishment	August 1947
Capital	¥21,526 million
Number of Employees	7,125 (Consolidated) (including fixed-term employees)

Common Stock

- Issued 16,314,833 shares
- Trading Unit 100 shares
- Number of Shareholders 13,097

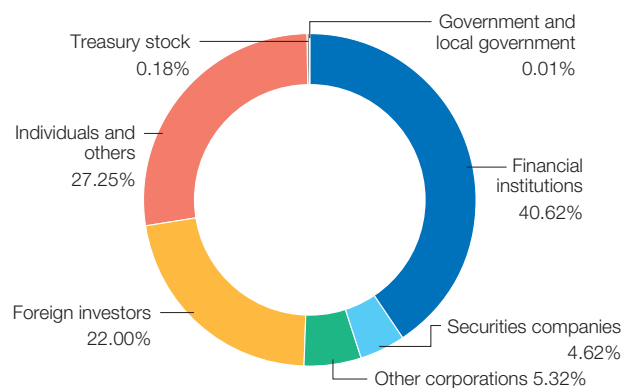
Major Shareholders (Top 10)

Name	Percentage of issued shares (%)
Japan Trustee Services Bank, Ltd. (Trust Account)	11.74
The Master Trust Bank of Japan, Ltd. (Trust Account)	3.58
The Bank of Tokyo-Mitsubishi UFJ, Ltd.	3.55
Nippon Life Insurance Company	3.15
Japan Trustee Services Bank, Ltd. (Trust Account 9)	2.61
MSCO CUSTOMER SECURITIES	2.19
Sumitomo Mitsui Banking Corporation	2.05
DFA INTL SMALL CAP VALUE PORTFOLIO	1.93
Japan Trustee Services Bank, Ltd. (Trust Account 5)	1.90
JAPAN CAPACITOR INDUSTRIAL CO., LTD.	1.43

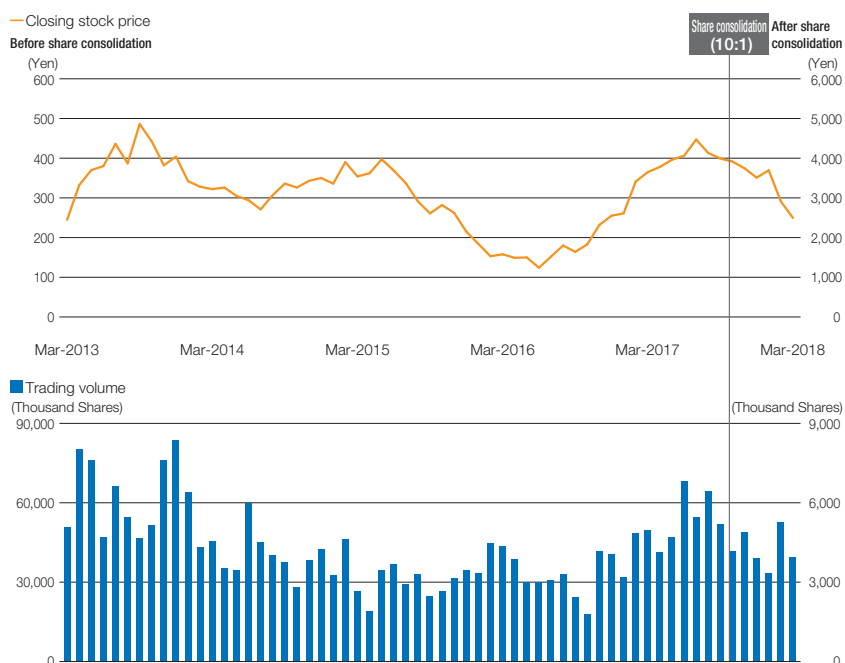
Note: Shareholding ratio is calculated by subtracting treasury stock.

Stock Listing	First Section of the Tokyo Stock Exchange
Securities Code	6997
Fiscal Year-End	March 31
Ordinary General Shareholders' Meeting	June
Shareholder Registry Administrator	Mitsubishi UFJ Trust and Banking Corporation
Head Office	5-6-4, Osaki, Shinagawa-ku, Tokyo 141-8605, Japan TEL: +81-3-5436-7711 FAX: +81-3-5436-7631

Ownership and Distribution of Shares



Stock Price and Volume (Tokyo Stock Exchange)



About share consolidation and change in number of shares constituting one unit

On October 1, 2017, we conducted a share consolidation for common stock (10 shares consolidated to 1 share) and changed the number of shares constituting one unit (from 1,000 shares to 100 shares).

Highest and Lowest Annual Stock Prices

FY	High (¥)	Low (¥)
2013	510	224
2014	405	264
2015	417	128
2016	394	117
2017	475 (4,550)	303 (2,342)

Notes: 1. Highest and lowest stock prices are the prices listed on First Section of the Tokyo Stock Exchange
2. The stock price for FY2017 is indicated as the highest and lowest stock prices prior to the share consolidation, with the post-consolidation highest and lowest prices indicated in ().