

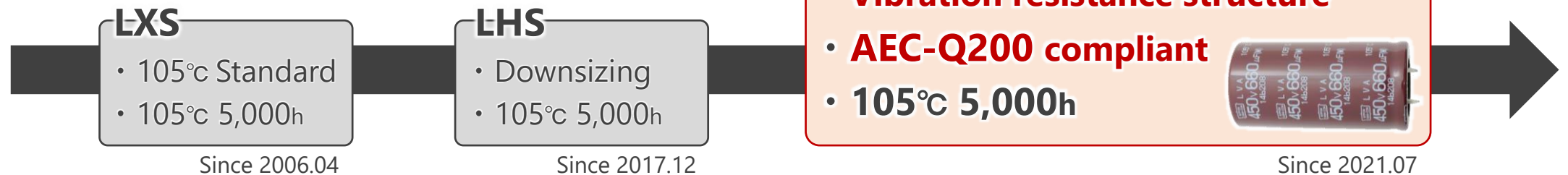
● Feature

- ☑ Endurance: **105°C 5,000h** (with ripple)
- ☑ Voltage: 450V_{dc}
- ☑ Capacitance: 150_{uF} to 890_{uF}
- ☑ Size: φ25.4×25L to φ35×60L
- ☑ Vibration resistance structure

● Product Chart

- ☑ **Recommended to replace from KMS to KVB**

*105°C5,000h with AEC-Q200 compliant

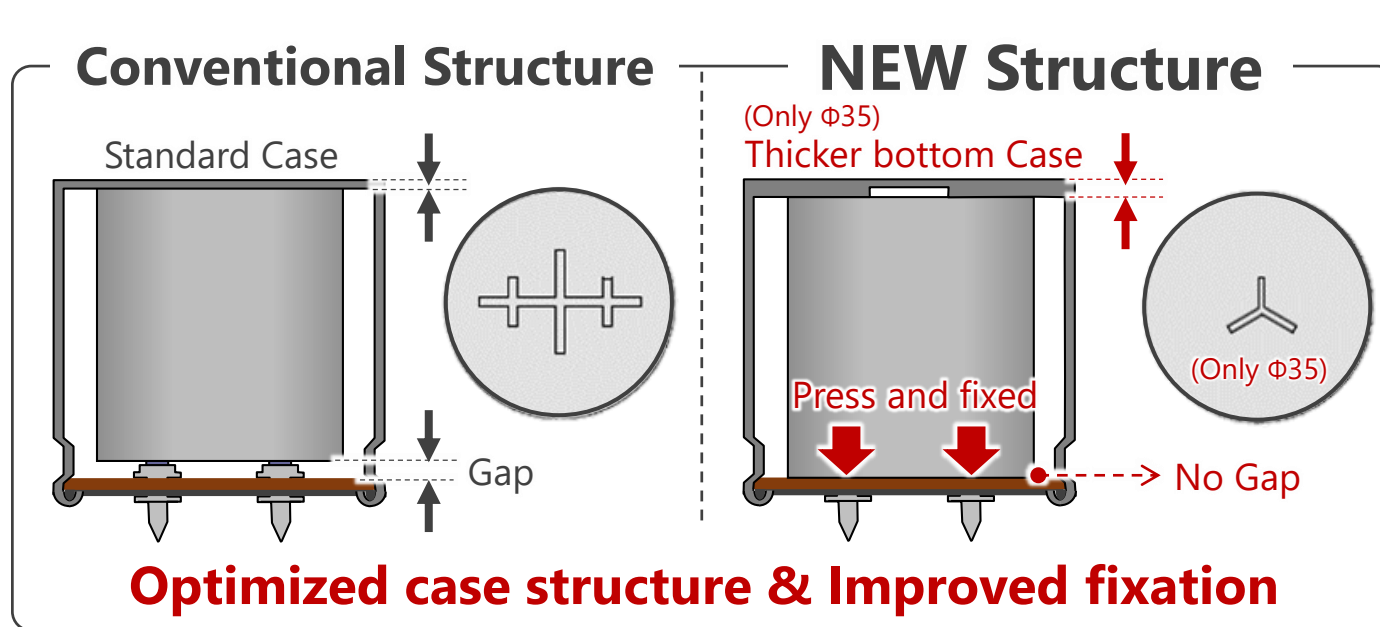


● Recommended Application

- ☑ For Automotive OBC (On Board Charger)
- ☑ PFC Circuit
- ☑ High reliability required applications



● Advantage



Conventional
LHS

【 Key Technologies 】

Case (Only φ35)
• Vibration resistance

Element fixation
• Press and fixed

Separator
• Optimized thickness & with

NEW
LVA

✓ Two advantages from LHS to LVA



- ① **High reliability** . . . AEC-Q200 compliant
- ② **Line up for automotive**

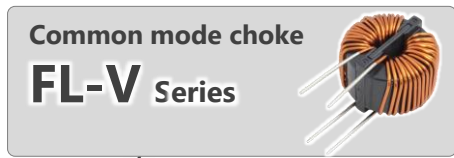
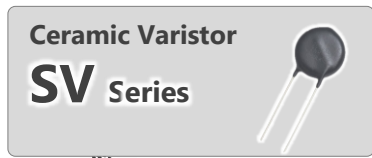
● Benefit/Evidence

- ➔ ① **High reliability** . . . Designed for high reliability required application such as automotive
- ② Line up for Automotive . . . For ease of selection

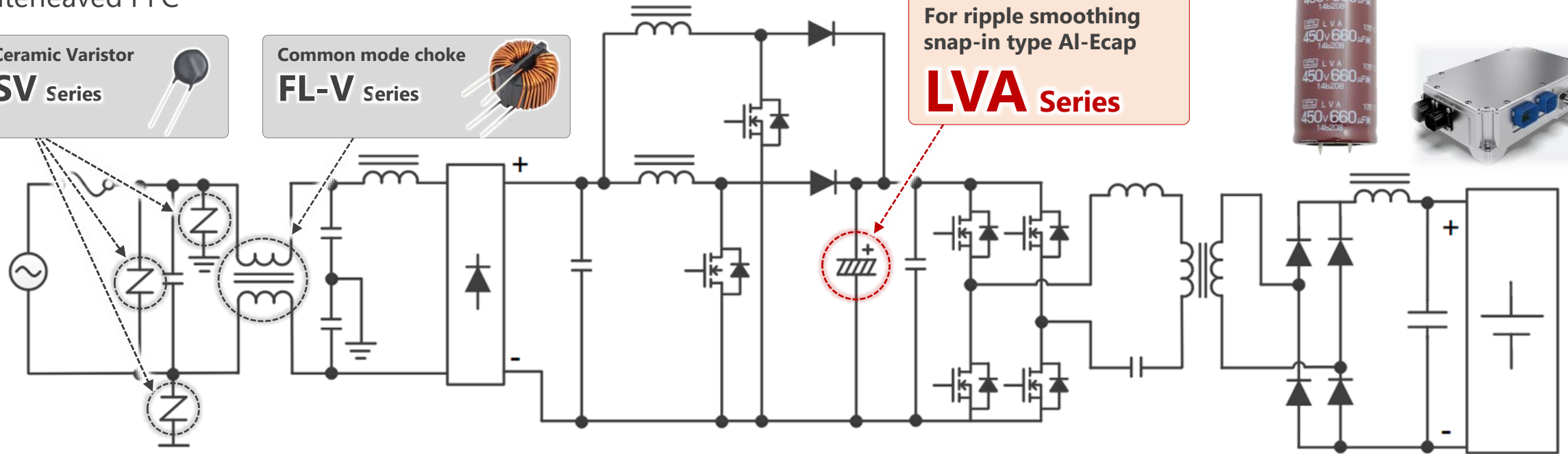
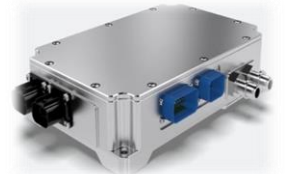


☑ Recommended for automotive On-board charger

*Interleaved PFC



For ripple smoothing
snap-in type Al-Ecap
LVA Series



● **Benefit/Evidence**

① High reliability · · · Designed for high reliability required application such as automotive

➔ ② **Line up for automotive** · · · **For ease of selection**



☑ **AEC-Q200 compliant**

LVA ^{AEC-Q200} Improved strength for vibration

● **JIS Vibration**

- ☑ Acceleration:
0.75mm half amplitude
or 10G (Whichever is less severe)
- ☑ Frequency range: 10 to 55Hz
- ☑ Sweep time: 1min (round trip)
- ☑ Direction & period of motion:
2hrs in each of X, Y, Z direction

● **AEC-Q200 vibration**

- ☑ Acceleration: 5G
- ☑ Frequency range: 10 to 2,000Hz
- ☑ Sweep time: 20min (round trip)
- ☑ Direction & period of motion:
4hrs in each of X, Y, Z direction

Upon your requests,
We could provide the AEC-Q200 test results.



☑ **Ease of selection**

	<div style="border: 1px solid black; padding: 5px; display: inline-block;"> KVA ^{AEC-Q200} 105°C2,000h </div>	970 μ F (450V, ϕ 35×60L)	
	<div style="border: 1px solid black; padding: 5px; display: inline-block;"> KVB ^{AEC-Q200} 105°C3,000h </div>	920 μ F (450V, ϕ 35×60L)	
	<div style="border: 1px solid black; padding: 5px; display: inline-block;"> LVA ^{AEC-Q200} 105°C5,000h </div>	890μF (450V, ϕ 35×60L)	