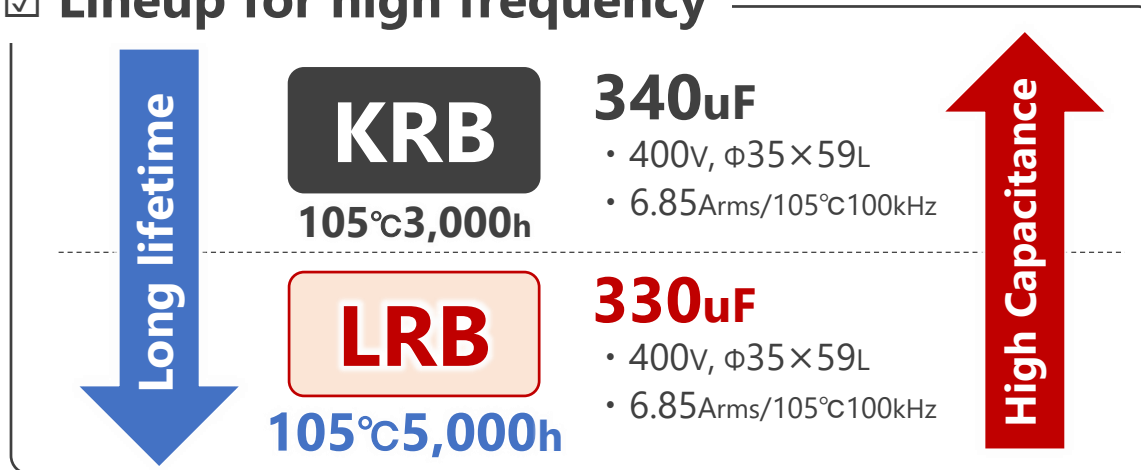


● Feature

- ☑ Endurance: 105°C 5,000h (with ripple)
- ☑ Rated voltage: 400V_{dc} / 420V_{dc} / 450V_{dc}
- ☑ Rated capacitance: 85 to 330μF
- ☑ Case Size: φ30×35L to φ35×59L
- ☑ Stable capacitance at high frequency
- ☑ Low ESR / Higher ripple current in wide frequency range

☑ Lineup for high frequency



● Recommended Application

- ☑ Smoothing ripple current in high frequency
- ☑ Application that do not require low freq. capacitance
- ☑ Recommended to replacing film-capacitor to LRB

NEW

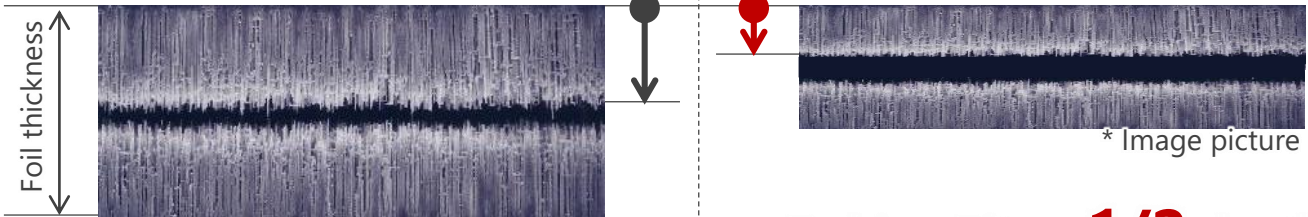
LRB — New Concept Product !!

- 105°C 5,000h
 - For high frequency
- Higher capacitance
High ripple current
Low ESR



● Advantage

Conventional **New design**



*image picture * Image picture

Etching Pit ⇒ 1/2 depth

- **Shallow depth:** High-speed charging/discharging
- **Thin foil:** Lower ESR by increasing foil area

【Key Technologies】

Al foil

- Newly designed anode foil etching pit

Anode foil for high freq.



Patented

✓ Three advantages of LRB



- ① **Stable capacitance** (High frequency range)
- ② **Low ESR** (Wide frequency range)
- ③ **Higher ripple current** (Wide frequency range)

NEW
LRB

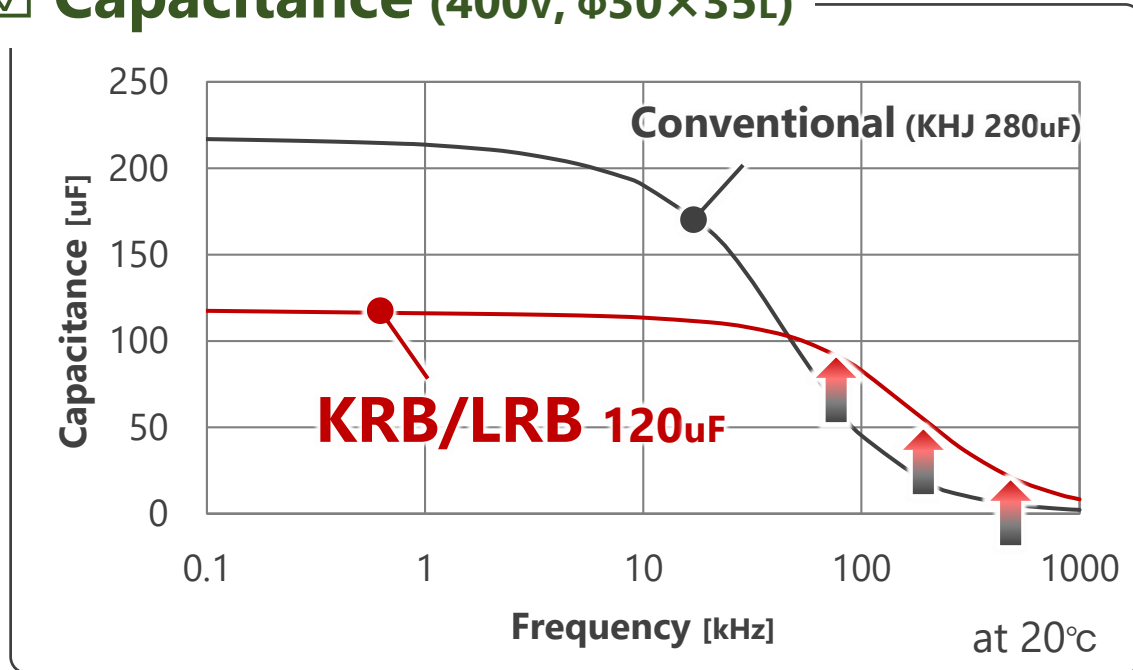
New Concept Product !!
Specialized high frequency
Replace Film capacitors



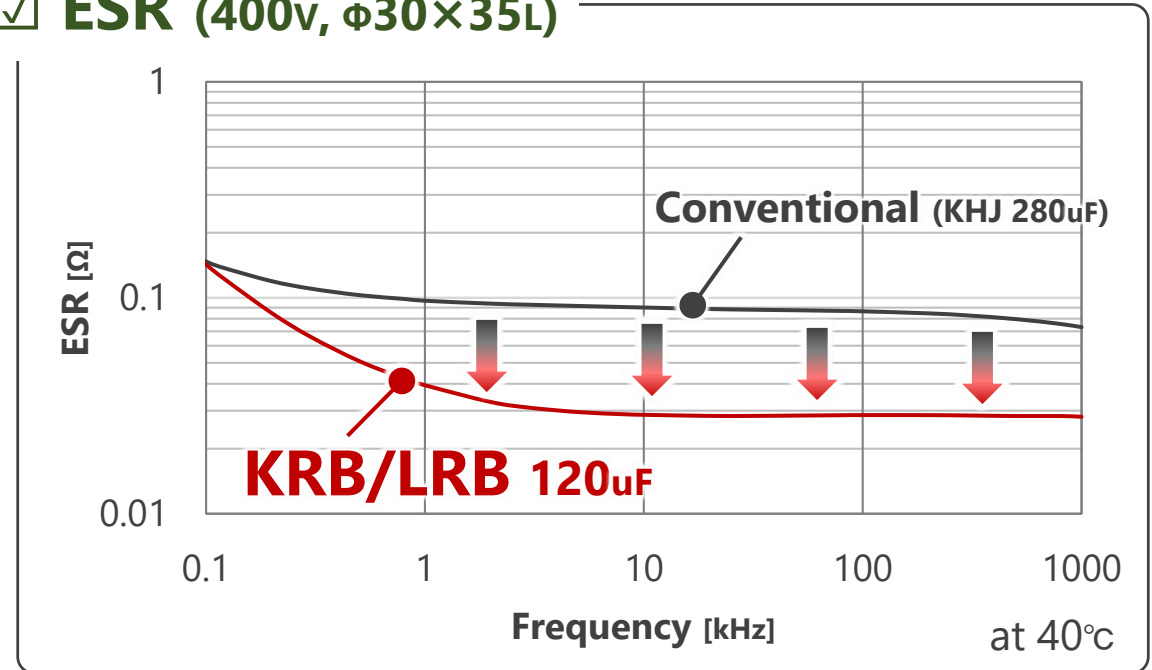
● **Benefit/Evidence**

- ➔ ① **Stable capacitance (High frequency range)**
- ➔ ② **Low ESR (Wide frequency range)** **Meet higher frequency design**
- ③ **Higher ripple current (Wide frequency range)** . . **Equipment downsizing, Reduced # of capacitors**

☑ **Capacitance (400V, $\phi 30 \times 35L$)**



☑ **ESR (400V, $\phi 30 \times 35L$)**



*Reference data of prototype

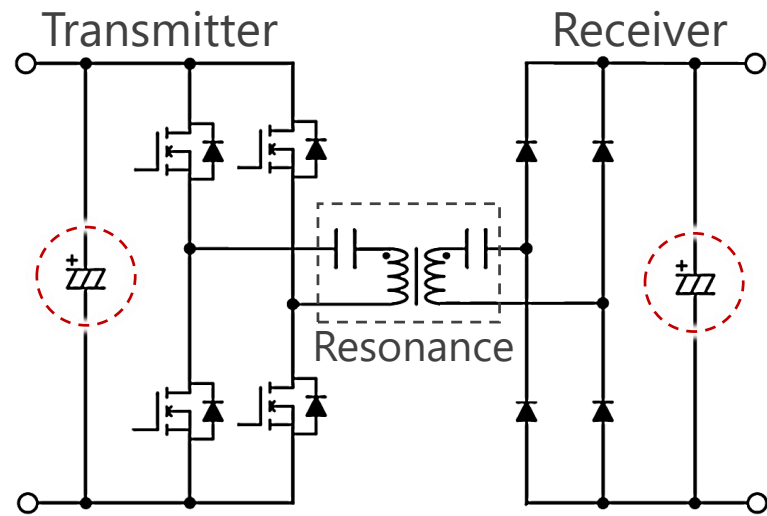


● Benefit/Evidence

- ① Stable capacitance (High frequency range)
- ② Low ESR (Wide frequency range) Meet higher frequency design

➔ ③ **Higher ripple current (Wide frequency range)** . . **Equipment downsizing, Reduced # of capacitors**

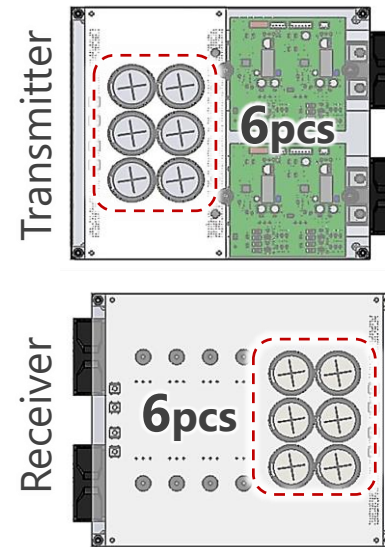
☑ NEW proposal for high frequency application



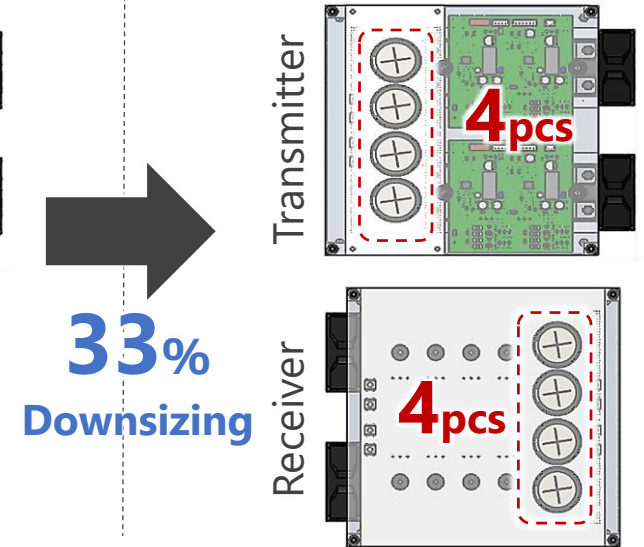
<Wireless Power Transmission System>

- **Input**
 - 320Vdc
 - 25Amax
- **Output**
 - 7kW (10kWmax)
 - 28Amax
 - 250-300Vdc
- **MOSFET**
 - SiC (85kHz)

Using KMT *Custom
(400v680uF, $\phi 35 \times 50L$)



Using KRB/LRB
(400v210uF, $\phi 35 \times 41L$)



33%
Downsizing