

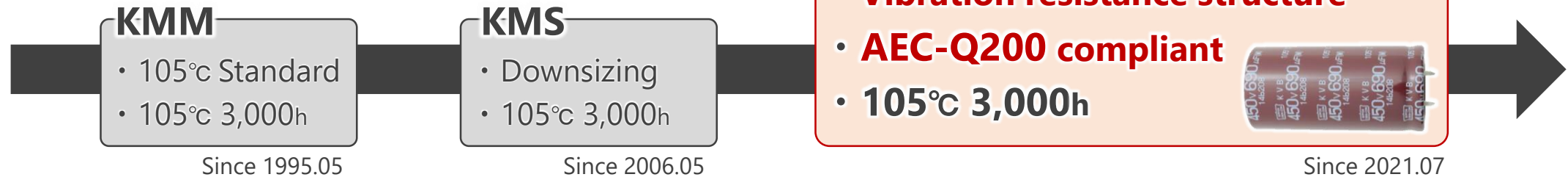
● Feature

- ☑ Endurance: **105°C 3,000h** (with ripple)
- ☑ Voltage: 450V_{dc}
- ☑ Capacitance: 150_{uF} to 920_{uF}
- ☑ Size: φ25.4×25L to φ35×60L
- ☑ Vibration resistance structure

● Product Chart

- ☑ **Recommended to replace from KMS to KVB**

*105°C3,000h with AEC-Q200 compliant

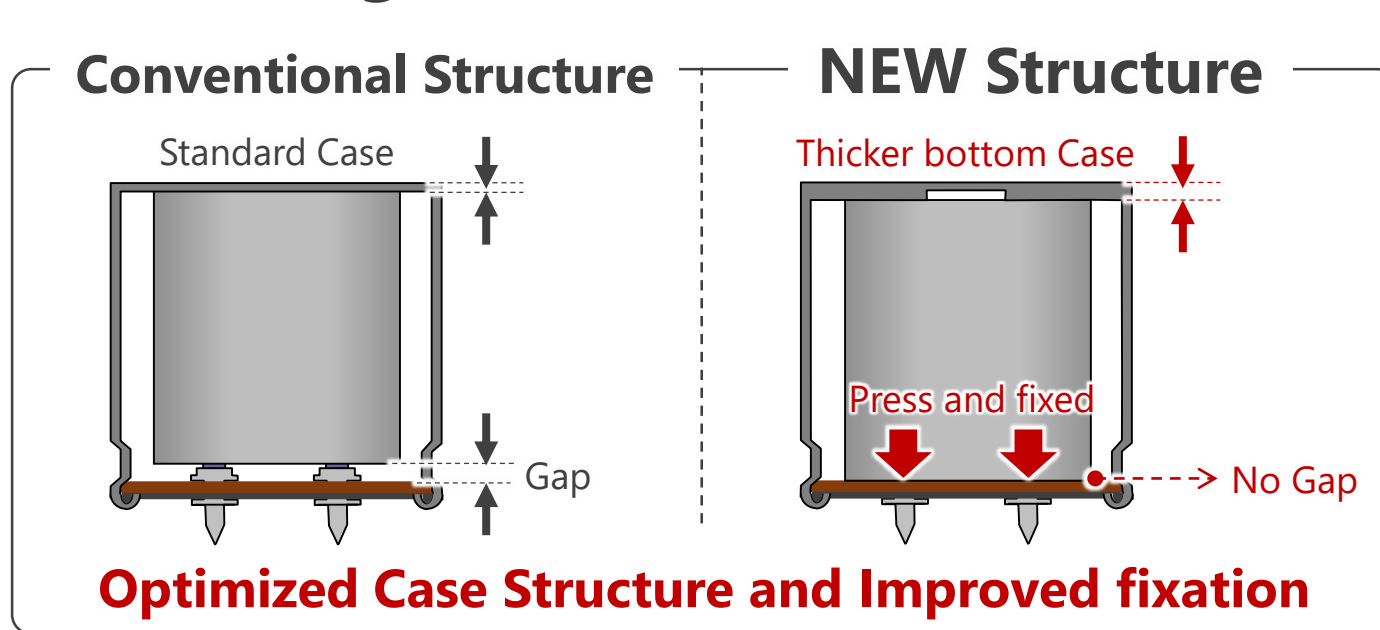


● Recommended Application

- ☑ For Automotive OBC (On Board Charger)
- ☑ PFC Circuit
- ☑ High reliability required applications



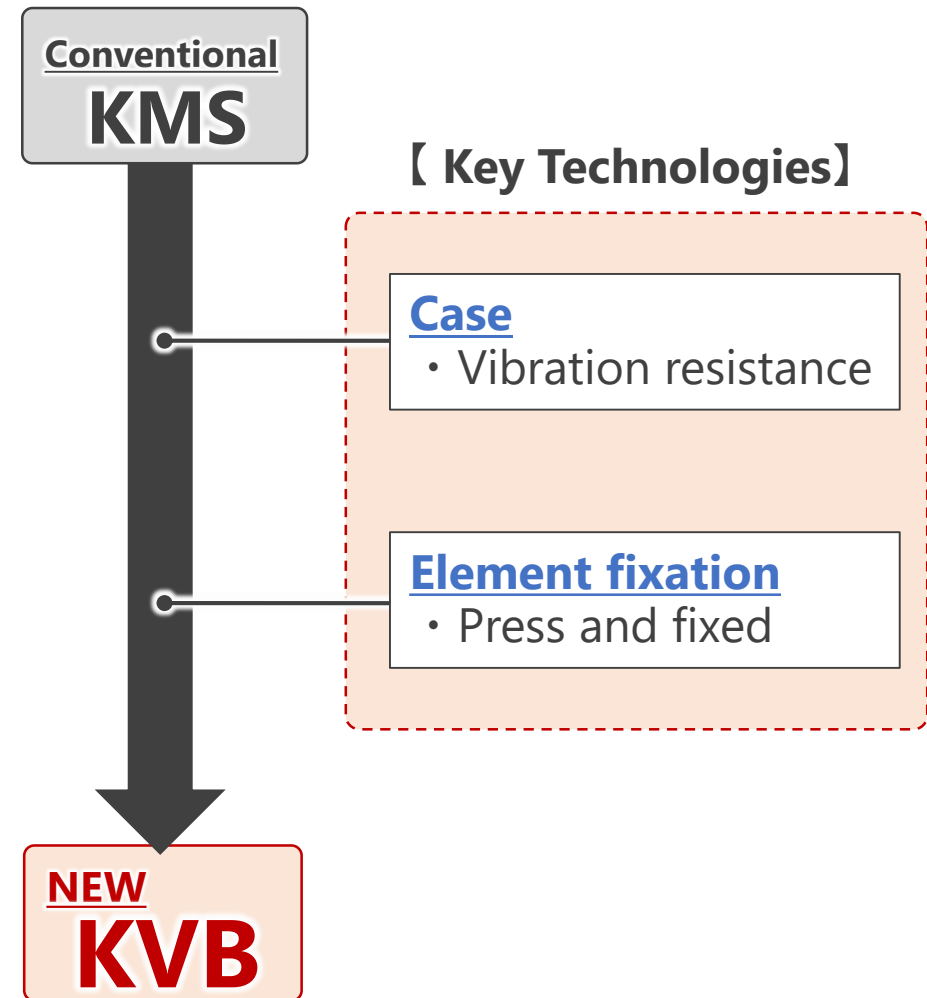
● Advantage



✓ Two Advantages from KMS to KVB



- ① **High Reliability** · · · AEC-Q200 compliant
- ② **Line up for automotive**

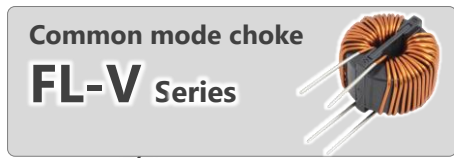
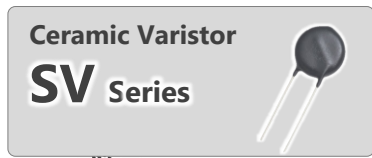


● Benefit/Evidence

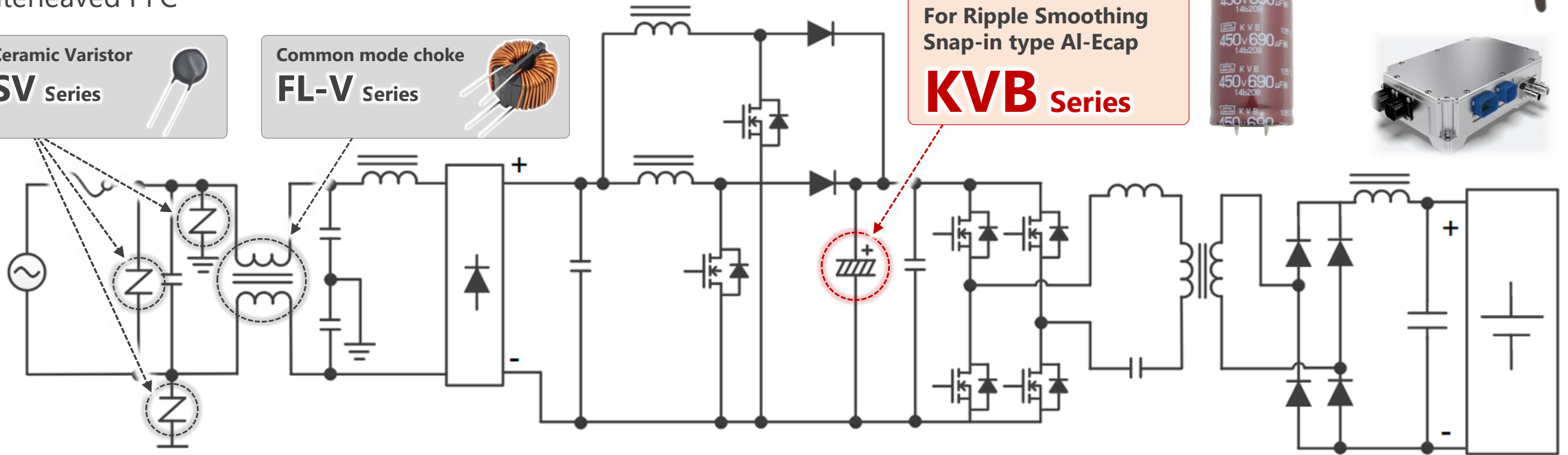
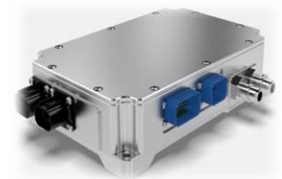
- ➔ ① **High reliability** . . . Designed for high reliability required application such as Automotive
- ② Line up for Automotive . . . For ease of selection

☑ **Recommended for Automotive On-board charger**

*Interleaved PFC



For Ripple Smoothing
Snap-in type Al-Ecap
KVB Series



● **Benefit/Evidence**

① High reliability · · · Designed for high reliability required application such as Automotive

➔ ② **Line up for Automotive** · · · **For ease of selection**

☑ **AEC-Q200 Compliant**

KVB ^{AEC-Q200} Improved strength for vibration

● **JIS Vibration**

- 10~55Hz, 10G
- Sweep time: 1min
- Total 6hrs

● **AEC-Q200 vibration**

- 10~2,000Hz, 5G
- Sweep time: 20min
- Total 12hrs

Upon your requests,
We could provide the AEC-Q200 test results.



☑ **Ease of selection**



KVA ^{AEC-Q200}
105°C2,000h

970uF
(450V, φ35×60L)

KVB ^{AEC-Q200}
105°C3,000h

920uF
(450V, φ35×60L)

LVA ^{AEC-Q200}
105°C5,000h

890uF
(450V, φ35×60L)

