

● **Feature**

- ☑ Endurance: **135°C 2,000h to 3,000h** (with ripple)
- ☑ Voltage: 25V_{dc} to 100V_{dc}
- ☑ Capacitance: 160uF to 12,000uF
- ☑ Size: φ12.5×20L to φ18×40L
- ☑ **Guranteed short time at 150°C** (150°C100h+135°C1,500 to 2,500h)

● **Recommended Application**

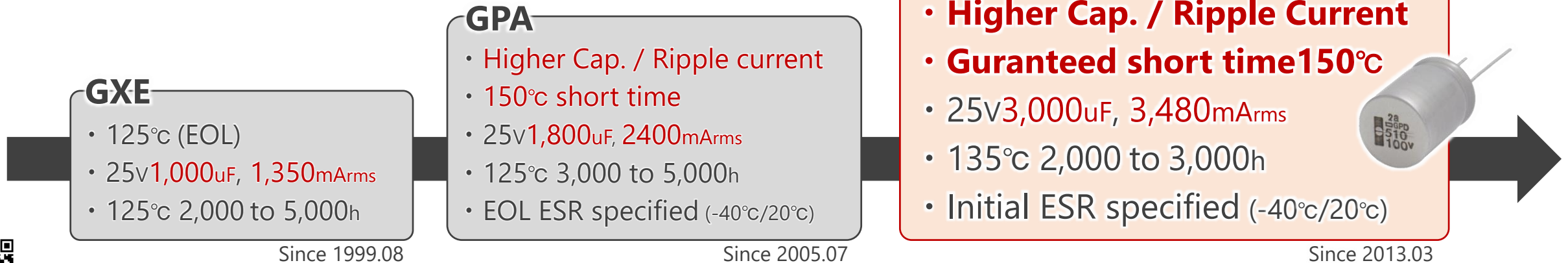
- ☑ Automotive ECUs (e.g., Direct injection)
- ☑ For High temperature usage
- ☑ AEC-Q200 compliant



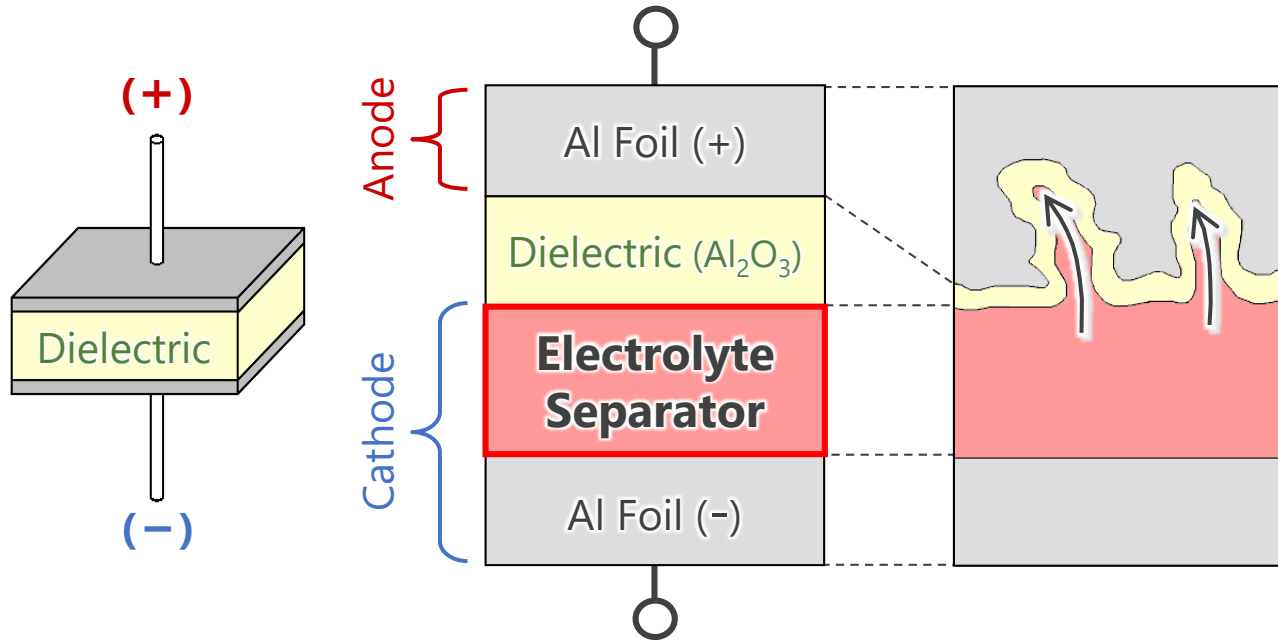
● **Product Chart**

- ☑ **Recommended to replace from GPA to GPD**

*Lineup for Automotive High heat resistance



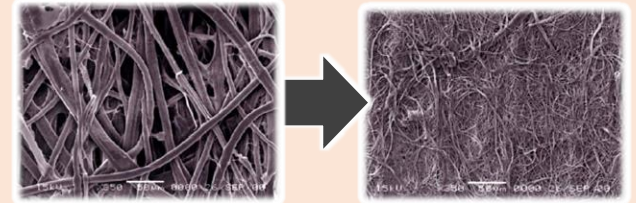
● Advantage



Conventional
GPA

【Key Technologies】

Separator
• Thin / High density



Electrolyte
• High heat resistance

Sleeve
• Outer sleeve less

GPD

✓ Two advantages from GPA to GPD



① **Downsizing**

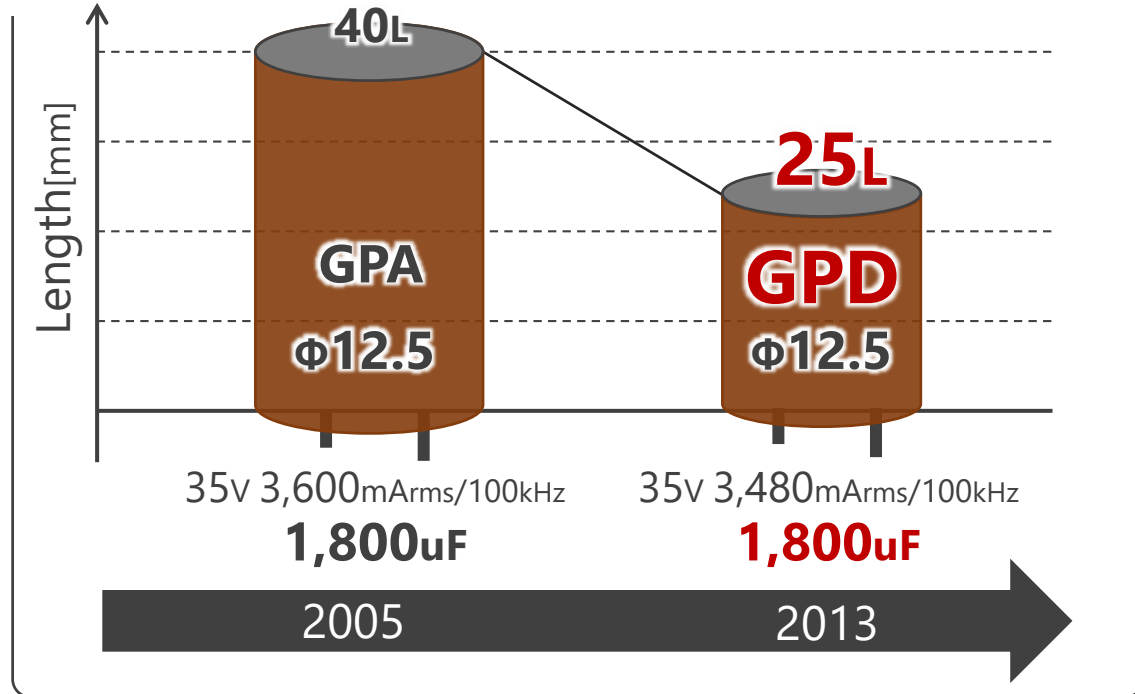
② **Higher cap. / Higher ripple**

● Benefit / Evidence

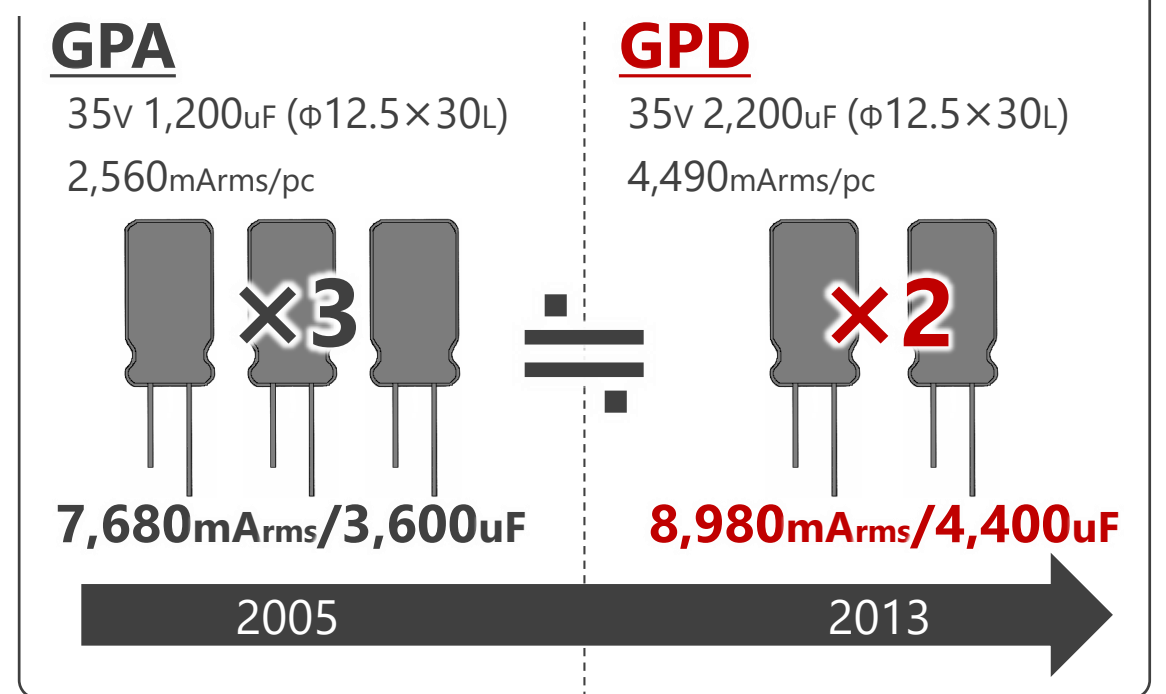
- ➔ ① **Downsizing** . . . Equipment downsizing/Low height/Reduce # of capacitors
- ② Higher cap. / Higher ripple . . . Longer equipment life



☑ **Comparison at height (fixed diameter)**



☑ **Reduced # of parts (fixed total ripple)**



● **Benefit / Evidence**

① Downsizing . . . Equipment downsizing/Low height/Reduce # of capacitors

➔ ② Higher cap. / Higher ripple . . . Longer equipment life

