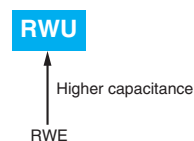


## RWU Series

- Higher capacitance than RWE series.
- Endurance with ripple current: 2,000 hours at 85°C
- Suitable for UPS devices and servo press machines where higher capacitance is required.
- RoHS2 compliant



## ◆ SPECIFICATIONS

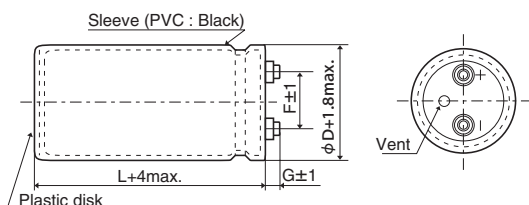
Items	Characteristics						
Category							
Temperature Range	-40 to +85°C						
Rated Voltage Range	400 & 450V <sub>dc</sub>						
Capacitance Tolerance	±20% (M) (at 20°C, 120Hz)						
Leakage Current	I=0.01CV or 7mA, whichever is smaller. Where, I : Max. leakage current (μA), C : Nominal capacitance (μF), V : Rated voltage (V) (at 20°C after 5 minutes)						
Dissipation Factor (tan δ)	0.25 max. (at 20°C, 120Hz)						
Low Temperature Characteristics	Capacitance change $C(-25^{\circ}\text{C})/C(+20^{\circ}\text{C}) \geq 0.7$ (at 120Hz)						
Insulation Resistance	When measured between the terminals that are connected to each other and to the mounting clamp on the insulating sleeve covering the case by using an insulation resistance meter of 500V <sub>dc</sub> , the insulation resistance shall not be less than 100MΩ.						
Insulation Withstanding Voltage	When a voltage of 2,000V <sub>ac</sub> is applied for 1 minute between the terminals that are connected to each other and to the mounting clamp on the insulating sleeve covering the case, there shall not be electrical damage.						
Endurance	The following specifications shall be satisfied when the capacitors are restored to 20°C after subjected to DC voltage with the rated ripple current is applied (the peak voltage shall not exceed the rated voltage) for 2,000 hours at 85°C. <table border="1"> <tr> <td>Capacitance change</td><td>≤ ±20% of the initial value</td></tr> <tr> <td>D.F. (tan δ)</td><td>≤ 200% of the initial specified value</td></tr> <tr> <td>Leakage current</td><td>≤ The initial specified value</td></tr> </table>	Capacitance change	≤ ±20% of the initial value	D.F. (tan δ)	≤ 200% of the initial specified value	Leakage current	≤ The initial specified value
Capacitance change	≤ ±20% of the initial value						
D.F. (tan δ)	≤ 200% of the initial specified value						
Leakage current	≤ The initial specified value						
Shelf Life	The following specifications shall be satisfied when the capacitors are restored to 20°C after exposing them for 500 hours at 85°C without voltage applied. Before the measurement, the capacitor shall be preconditioned by applying voltage according to Item 4.1 of JIS C 5101-4. <table border="1"> <tr> <td>Capacitance change</td><td>≤ ±20% of the initial value</td></tr> <tr> <td>D.F. (tan δ)</td><td>≤ 200% of the initial specified value</td></tr> <tr> <td>Leakage current</td><td>≤ The initial specified value</td></tr> </table>	Capacitance change	≤ ±20% of the initial value	D.F. (tan δ)	≤ 200% of the initial specified value	Leakage current	≤ The initial specified value
Capacitance change	≤ ±20% of the initial value						
D.F. (tan δ)	≤ 200% of the initial specified value						
Leakage current	≤ The initial specified value						

## ◆ DIMENSIONS (Screw-Mount) [mm]

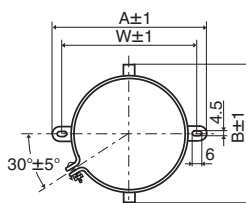
● Terminal Code : LG

● Mounting Clamp Code : B

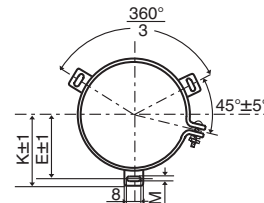
● Mounting Clamp Code : C : Standard



φ 63.5 : G=6  
 φ 76.2 & φ 89 : G=5  
 φ 100 : G=10



φD	A	B	W	F
63.5	90.0	76.0	80.0	28.0
76.2	104.5	90.0	93.5	31.5



φD	E	K	M	F	J
63.5	38.1	43.5	4.5	28.0	14.0
76.2	44.5	50.0	4.5	31.5	14.0
89	50.8	56.5	4.5	31.5	16.0
100	56.5	63.4	5.5	41.5	18.0

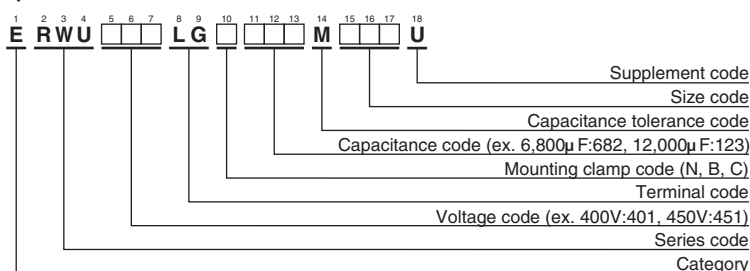
&lt;Screw specifications&gt;

to φ89 Plus hexagon-headed screw : M5×0.8×10  
 Maximum screw tightening torque : 3.23Nm

φ100 Cross-recessed head (Phillips) screw : M8×1.25×16  
 Spring washer, Washer  
 Maximum screw tightening torque : 6.31Nm

\* The screw and the mounting clamp are separately supplied and not attached to the product.

## ◆ PART NUMBERING SYSTEM



Please refer to "Product code guide (screw-mount terminal type)"

**◆STANDARD RATINGS**

WV (V <sub>dc</sub> )	Cap (μF)	Case size φD×L(mm)	tan δ	Rated ripple current (Arms/ 85°C,120Hz)	Part No.	WV (V <sub>dc</sub> )	Cap (μF)	Case size φD×L(mm)	tan δ	Rated ripple current (Arms/ 85°C,120Hz)	Part No.
400	2,200	63.5×60	0.25	5.2	ERWU401LGC222MD60U	450	2,200	63.5×70	0.25	5.3	ERWU451LGC222MD70U
	2,700	63.5×70	0.25	6.1	ERWU401LGC272MD70U		2,700	63.5×75	0.25	6.1	ERWU451LGC272MD75U
	3,300	63.5×80	0.25	7.2	ERWU401LGC332MD80U		3,300	63.5×90	0.25	7.3	ERWU451LGC332MD90U
	3,900	63.5×85	0.25	8.0	ERWU401LGC392MD85U		3,900	63.5×100	0.25	8.3	ERWU451LGC392MDA0U
	4,700	63.5×100	0.25	9.4	ERWU401LGC472MDA0U		4,700	63.5×115	0.25	9.6	ERWU451LGC472MDB5U
	5,600	63.5×115	0.25	10.0	ERWU401LGC562MDB5U		5,600	63.5×130	0.25	10.3	ERWU451LGC562MDD0U
	6,800	63.5×130	0.25	11.7	ERWU401LGC682MDD0U		6,800	63.5×150	0.25	12.1	ERWU451LGC682MDF0U
	8,200	63.5×155	0.25	13.1	ERWU401LGC822MDF5U		8,200	76.2×130	0.25	12.9	ERWU451LGC822MED0U
	8,200	76.2×110	0.25	12.5	ERWU401LGC822MEB0U		10,000	76.2×150	0.25	15.1	ERWU451LGC103MEF0U
	10,000	76.2×130	0.25	14.8	ERWU401LGC103MED0U		12,000	76.2×175	0.25	17.1	ERWU451LGC123MEH5U
	12,000	76.2×150	0.25	16.6	ERWU401LGC123MEF0U		12,000	89×135	0.25	14.1	ERWU451LGC123MFD5U
	15,000	89×140	0.25	16.6	ERWU401LGC153MFE0U		15,000	89×160	0.25	17.0	ERWU451LGC153MFG0U
	18,000	89×165	0.25	19.1	ERWU401LGC183MFG5U		18,000	89×205	0.25	20.3	ERWU451LGC183MFL5U
	20,000	89×200	0.25	21.9	ERWU401LGC203MFL0U		20,000	89×230	0.25	22.5	ERWU451LGC203MFP0U
	20,000	100×160	0.25	21.2	ERWU401LGC203MGG0U		25,000	100×230	0.25	26.1	ERWU451LGC253MGP0U
	25,000	100×210	0.25	26.1	ERWU401LGC253MGM0U		30,000	100×270	0.25	30.5	ERWU451LGC303MGT0U
	30,000	100×235	0.25	29.7	ERWU401LGC303MGP5U						
	35,000	100×270	0.25	33.8	ERWU401LGC353MGT0U						

**◆RATED RIPLE CURRENT MULTIPLIERS**

● Frequency Multipliers

Frequency (Hz)	50	120	300	1k	3k
Coefficient	0.8	1.0	1.1	1.2	1.2

The deterioration of aluminum electrolytic capacitors accelerates their life due to the internal heating produced by ripple current. For details, refer to Section "5-3 Ripple Current Effect on Lifetime" in the catalog, Technical Note.

Also, for the RWU series capacitors, using them at operating voltage less than their rated voltage can extend their lifetime. For details, please contact a representative of Nippon Chemi-Con.



- Always read "Notes on Use" before using the product in order to enable you to use the product correctly and prevent any faults and accidents from occurring.
- Request the Product Specification on the product of NIPPON CHEMI-CON CORPORATION to refer to it as well as this brochure prior to the order of the products. Some specific notes on use of the ordered product may be described in the specifications.
- The products listed in this catalog are designed and manufactured for general electronics equipment use and are not intended for use in applications that can adversely affect human life; where the malfunction of equipment may cause damage to life or property. In addition, our products are not intended to be used in specific applications that may cause a major social impact. Please consult with us in advance of usage of our products in the following listed applications. ① Aerospace equipment ② Power generation equipment such as thermal power, nuclear power etc. ③ Medical equipment ④ Transport equipment (automobiles, trains, ships, etc.) ⑤ Transportation control equipment ⑥ Disaster prevention / crime prevention equipment ⑦ Highly publicized information processing equipment ⑧ Submarine equipment ⑨ Other applications that are not considered general-purpose applications.
- The circuits described as examples in this catalog and the "delivery specifications" are featured in order to show the operations and usage of our products, however, this fact does not guarantee that the circuits are available to function in your equipment systems. We are not in any case responsible for any failures or damage caused by the use of information contained herein. You should examine our products, of which the characteristics are described in the "delivery specifications" and other documents, and determine whether or not our products suit your requirements according to the specifications of your equipment systems. Therefore, you bear final responsibility regarding the use of our products.  
Please make sure that you take appropriate safety measures such as use of redundant design and malfunction prevention measures in order to prevent fatal accidents and/or fires in the event any of our products malfunction.
- We strongly recommend our customers to purchase Nippon Chemi-Con products only through our official sales channels. We assume no responsibility for any defects or damages caused by using products purchased from outside our official sales channel or of counterfeit goods. In addition, we will ask the customer to pay the investigation cost for products purchased outside our official sales channel.
- We reserve the right to discontinue production and delivery of products. We do not guarantee that all the products included in this catalog will be available in the future.  
The aforementioned does not apply in the case of individual agreements deviating from the foregoing for customer-specific products
- We continually strive to improve the quality and reliability of our products, but in any case that our product does not meet our published specifications, please stop using it promptly and contact us immediately. As for compensation for non-conforming goods delivered by Chemi-Con, we will limit it only to goods found in non-compliance of our published specifications. This may be accomplished by a no cost replacement of non-conforming individual products, a credit of the piece price paid per each individual non-conforming product, or in other ways deemed necessary.  
In addition, we have an established system with enhanced traceability, therefore we will limit the applicable lot items for any potential compensation.

[Part Numbering System](#)

[Part Numbering System \(Appendix\)](#)

[Standardization](#)

[Available Items by Manufacturing Locations](#)

[Environmental Measures](#)

[Technical Note](#)

[Precautions and Guidelines](#)

[Recommended Soldering Conditions](#)

[Taping, Lead-preforming and Packaging](#)

[Available Terminals for Snap-in and Screw Mount Type](#)