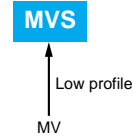


Alchip™ - **MVS** Series

- 4.5mm height
- Endurance : 2,000 hours at 85°C
- Solvent resistant type (see PRECAUTIONS AND GUIDELINES)
- RoHS Compliant

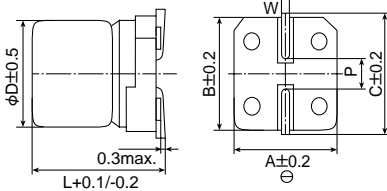


◆ **SPECIFICATIONS**

Items	Characteristics	
Category Temperature Range	-40 to +85°C	
Rated Voltage Range	4 to 50V _{dc}	
Capacitance Tolerance	±20% (M) (at 20°C, 120Hz)	
Leakage Current	I=0.01CV or 3µA, whichever is greater. Where, I : Max. leakage current (µA), C : Nominal capacitance (µF), V : Rated voltage (V) (at 20°C after 2 minutes)	
Dissipation Factor (tanδ)	Rated voltage (V _{dc})	4V 6.3V 10V 16V 25V 35V 50V
	tanδ (Max.)	0.50 0.30 0.24 0.19 0.16 0.14 0.14 (at 20°C, 120Hz)
Low Temperature Characteristics (Max. Impedance Ratio)	Rated voltage (V _{dc})	4V 6.3V 10V 16V 25V 35V 50V
	Z(-25°C)/Z(+20°C)	7 4 3 2 2 2 2 (at 120Hz)
	Z(-40°C)/Z(+20°C)	15 8 8 4 4 3 3
Endurance	The following specifications shall be satisfied when the capacitors are restored to 20°C after the rated voltage is applied for 2,000 hours at 85°C.	
	Rated voltage	4 & 6.3V _{dc} 10 to 50V _{dc}
	Capacitance change	≤±30% of the initial value ≤±25% of the initial value
	DF (tanδ)	≤300% of the initial specified value ≤300% of the initial specified value
	Leakage current	≤The initial specified value ≤The initial specified value
Shelf Life	The following specifications shall be satisfied when the capacitors are restored to 20°C after exposing them for 1,000 hours at 85°C without voltage applied. Before the measurement, the capacitor shall be preconditioned by applying voltage according to Item 4.1 of JIS C 5101-4.	
	Rated voltage	4 & 6.3V _{dc} 10 to 50V _{dc}
	Capacitance change	≤±30% of the initial value ≤±25% of the initial value
	DF (tanδ)	≤300% of the initial specified value ≤300% of the initial specified value
	Leakage current	≤The initial specified value ≤The initial specified value

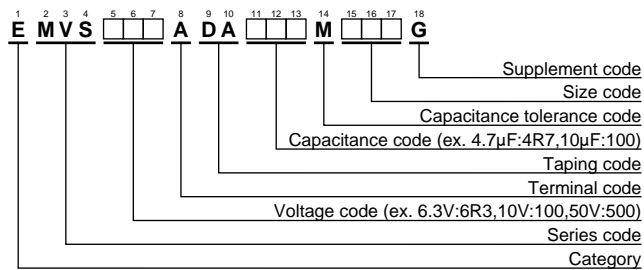
◆ **DIMENSIONS [mm]**

● Terminal Code : A



Size code	D	L	A	B	C	W	P
D46	4	4.5	4.3	4.3	5.1	0.5 to 0.8	1.0
E46	5	4.5	5.3	5.3	5.9	0.5 to 0.8	1.4
F46	6.3	4.5	6.6	6.6	7.2	0.5 to 0.8	1.9

◆ **PART NUMBERING SYSTEM**



Please refer to "Product code guide (surface mount type)"

◆ **MARKING**

EX) 16V47µF



◆ **STANDARD RATINGS**

WV (V _{dc})	Cap (µF)	Size code	tanδ	Rated ripple current (mA _{rms} /85°C, 120Hz)	Part No.	WV (V _{dc})	Cap (µF)	Size code	tanδ	Rated ripple current (mA _{rms} /85°C, 120Hz)	Part No.
4	33	D46	0.50	28	EMVS4R0ADA330MD46G	35	4.7	D46	0.14	18	EMVS350ADA4R7MD46G
	47	D46	0.50	33	EMVS4R0ADA470MD46G		10	E46	0.14	29	EMVS350ADA100ME46G
	100	E46	0.50	56	EMVS4R0ADA101ME46G		22	F46	0.14	46	EMVS350ADA220MF46G
	220	F46	0.50	96	EMVS4R0ADA221MF46G		50	0.10	D46	0.14	1.0
6.3	22	D46	0.30	28	EMVS6R3ADA220MD46G	0.22		D46	0.14	2.0	EMVS500ADAR22MD46G
	47	E46	0.30	45	EMVS6R3ADA470ME46G	0.33		D46	0.14	2.8	EMVS500ADAR33MD46G
	100	F46	0.30	70	EMVS6R3ADA101MF46G	0.47		D46	0.14	4.0	EMVS500ADAR47MD46G
10	33	E46	0.24	41	EMVS100ADA330ME46G	1.0		D46	0.14	8.4	EMVS500ADA1R0MD46G
	10	D46	0.19	23	EMVS160ADA100MD46G	2.2		D46	0.14	13	EMVS500ADA2R2MD46G
16	22	E46	0.19	37	EMVS160ADA220ME46G	3.3		D46	0.14	17	EMVS500ADA3R3MD46G
	47	F46	0.19	58	EMVS160ADA470MF46G	4.7		E46	0.14	20	EMVS500ADA4R7ME46G
25	33	F46	0.16	52	EMVS250ADA330MF46G	10	F46	0.14	33	EMVS500ADA100MF46G	