

TAPING SPECIFICATIONS
SURFACE MOUNT TYPE (TAPING)



◆CARRIER TAPE [mm]

Fig.1

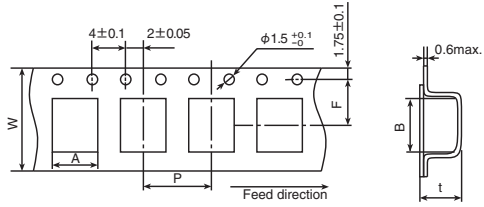


Fig.3

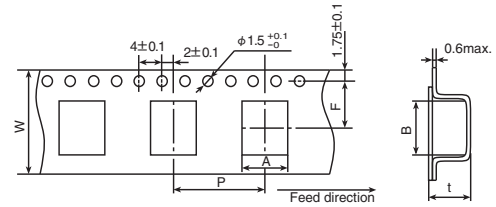


Fig.2

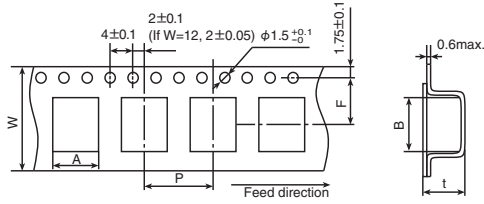
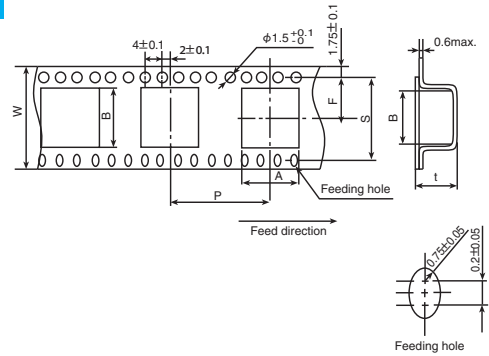


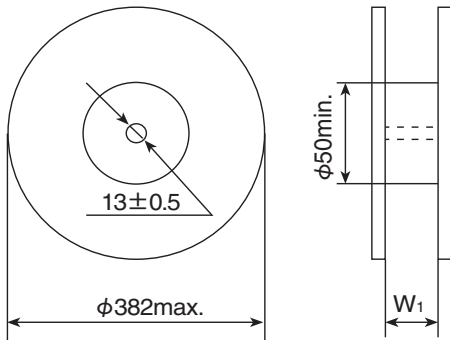
Fig.4



[mm]

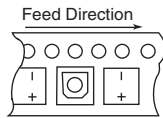
Series	Items	W	A	B	F	P	t	S	Fig.	
		±0.3	±0.2	±0.2	±0.1	±0.1	±0.2	±0.1		
Alchip™ MVA/MVE MZJ/MZA MVY/MZF MZE/MZK MLA/MLF MLE/MLK MVL/MVJ MVH/MHB MHJ/MKB MV-BP MVK-BP	D55	12.0	4.7	4.7	5.5	8.0	5.7	—	1	
	D60,D61	12.0	4.7	4.7	5.5	8.0	6.3	—	1	
	D73	12.0	4.6	4.6	5.5	8.0	7.5	—	1	
	E55	12.0	5.7	5.7	5.5	12.0	5.7	—	2	
	E60,E61	12.0	5.7	5.7	5.5	12.0	6.3	—	2	
	E73	16.0	5.7	5.7	7.5	12.0	7.5	—	2	
	F46	16.0	7.0	7.0	7.5	12.0	4.9	—	2	
	F55	16.0	7.0	7.0	7.5	12.0	5.7	—	2	
	F60,F61	16.0	7.0	7.0	7.5	12.0	6.3	—	2	
	F73	16.0	7.0	7.0	7.5	12.0	7.5	—	2	
	F80	16.0	7.0	7.0	7.5	12.0	8.2	—	2	
	F90	16.0	7.0	7.0	7.5	12.0	9.2	—	2	
	H63	16.0	8.7	8.7	7.5	12.0	6.8	—	2	
	H70	24.0	8.7	8.7	11.5	12.0	7.3	—	2	
	H80	24.0	8.7	8.7	11.5	12.0	8.3	—	2	
	HA0	24.0	8.7	8.7	11.5	16.0	11.0	—	3	
	HC0	24.0	8.7	8.7	11.5	16.0	12.7	—	3	
	NPCAP™ PXK/PXS PXF/PXE PXA/PXH	J80	24.0	10.7	10.7	11.5	16.0	8.3	—	3
		JA0	24.0	10.7	10.7	11.5	16.0	11.0	—	3
		JC0	24.0	10.7	10.7	11.5	16.0	12.8	—	3
KE0		32.0	13.4	13.4	14.2	24.0	14.0	28.4	4	
KG5		32.0	13.4	13.4	14.2	24.0	16.5	28.4	4	
LH0		44.0	17.5	17.5	20.2	28.0	16.8	40.4	4	
LN0		44.0	17.5	17.5	20.2	28.0	22.1	40.4	4	
MH0		44.0	19.5	19.5	20.2	32.0	17.1	40.4	4	
MN0	44.0	19.5	19.5	20.2	32.0	22.1	40.4	4		

◆ REEL DIMENSIONS [mm]



◆ POLARITY

- Alchip™ -MVA/MVE/MZJ
MZA/MVY/MZF
MZE/MZK/MLA
MLF/MLE/MLK
MVL/MVJ/MVH
MHB/MHJ/MKB
MV-BP/MVK-BP
NPCAP™ PXX/PXS/PXF
PXE/PXA/PXH

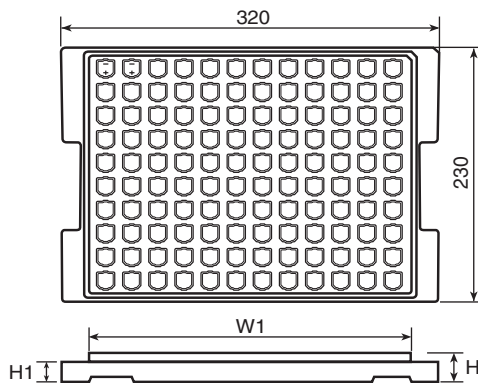


◆ QUANTITY PER REEL/BOX

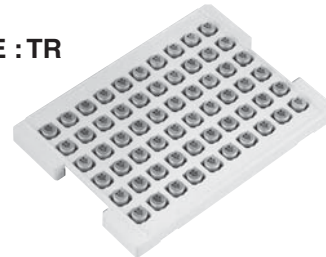
Series	Size code	Quantity (pcs/reel)	Quantity (pcs/box)	W ₁ (mm)	
Alchip™	D55,D60,D61	2,000	10,000	14	
	D73	1,500	7,500	14	
	E55,E60,E61	1,000	5,000	14	
	E73	1,000	5,000	18	
	F55,F60,F61,F73	1,000	5,000	18	
	F80	900	4,500	18	
	F90	800	4,000	18	
	H63	1,000	5,000	18	
	HA0	500	1,500	26	
	JA0	500	1,500	26	
	KE0	200	600	34	
	KG5	150	450	34	
	LH0	125	250	46	
	LN0	75	150	46	
	MH0	125	250	46	
	MN0	75	150	46	
	NPCAP™	D55	2,000	20,000	14
		E60,E61	1,000	10,000	14
F46,F55,F60,F61		1,000	7,000	18	
F80		900	6,300	18	
H70		1,000	6,000	26	
H80		900	5,400	26	
HA0		500	3,000	26	
HC0		400	1,200	26	
J80		500	3,000	26	
JA0		500	3,000	26	
JC0		400	1,200	26	

SURFACE MOUNT TYPE (TRAY)

◆ DIMENSIONS [mm]



● TRAY CODE : TR

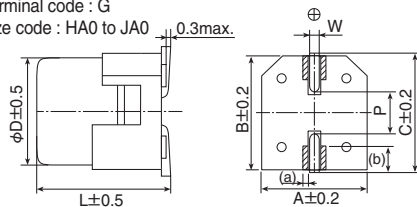


Size code	H [mm]	W ₁ [mm]	H ₁ [mm]	Quantity [pcs/tray]	Quantity [pcs/box]
KE0 & KG5	21.0	284	18.5	120	600
LH0 & LN0	28.0	284	24.0	80	400
MH0 & MN0	28.0	284	24.0	60	300

VIBRATION RESISTANT STRUCTURE (Terminal code : G)

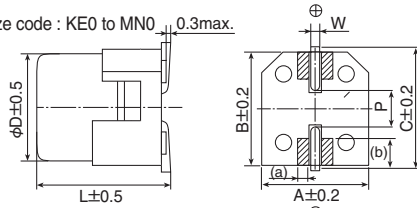
◆ DIMENSIONS [mm]

- Terminal code : G
- Size code : HA0 to JA0



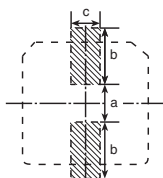
▨ : Dummy terminals

- Size code : KE0 to MN0



▨ : Dummy terminals

◆ RECOMMENDED SOLDER LAND



▨ Solder land on PC board

Size code	Dimensions of products (mm)									Solder land (mm)		
	D	L	A	B	C	W	P	(a)	(b)	a	b	c
HA0	8.0	10.0	8.3	8.3	9.0	0.7 to 1.1	3.1	(0.5)	(1.8)	3.1	4.2	3.5
JA0	10.0	10.0	10.3	10.3	11.0	0.7 to 1.1	4.5	(0.5)	(2.1)	4.5	4.4	3.5
KE0	12.5	13.5	13.0	13.0	13.7	1.0 to 1.3	4.2	(1.3)	(3.0)	3.4	6.3	9.3
KG5	12.5	16.0	13.0	13.0	13.7	1.0 to 1.3	4.2	(1.3)	(3.0)	3.4	6.3	9.3
LH0	16.0	16.5	17.0	17.0	18.0	1.0 to 1.3	6.5	(2.0)	(3.0)	4.7	7.8	9.6
LN0	16.0	21.5	17.0	17.0	18.0	1.0 to 1.3	6.5	(2.0)	(3.0)	4.7	7.8	9.6
MH0	18.0	16.5	19.0	19.0	20.0	1.0 to 1.3	6.5	(2.0)	(4.0)	4.7	8.8	9.6
MN0	18.0	21.5	19.0	19.0	20.0	1.0 to 1.3	6.5	(2.0)	(4.0)	4.7	8.8	9.6

() ; Ref.

TAPING SPECIFICATIONS
RADIAL LEAD TYPE (TAPING)



◆ DIMENSION [mm]

Fig.1

Taping Code : TA, TC
φD=φ4 to 8

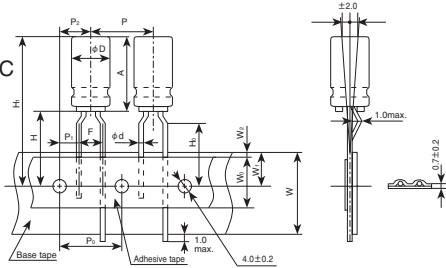


Fig.2

Taping Code : TD
φD=φ5
φD×L=φ4×7

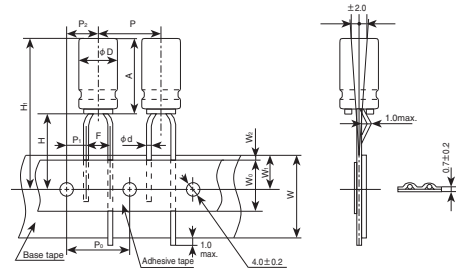


Fig.3

Taping Code : TD
φD=φ6.3 to 12.5

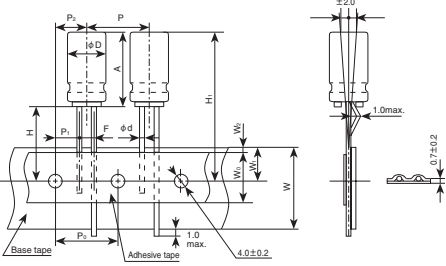
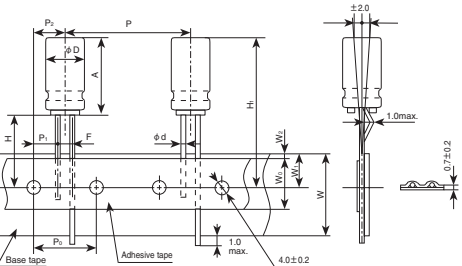


Fig.4

Taping Code : TE
φD=φ12.5



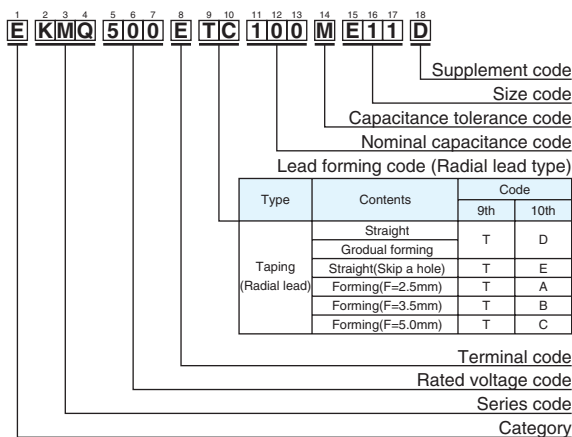
Code	Taping Code	Case size		φd	P	P ₀	P ₁	P ₂	F	W	W ₀	W ₁	W ₂	H	H ₀	H ₁	Fig.		
		φD	A																
tol.		—	—	±0.05	±1.0	±0.2	±0.7	±1.0	+0.8 -0.2	±0.5	min.	±0.5	max.	±0.75	±0.5				
Nominal	TA	4	5	0.45	12.7	12.7	5.1 3.85	6.35	2.5 5	18.0	6.0	9.0	1.5	17.5	16.0	H ₁ =H+A Check insertion machine specs.	1		
	TC		7	0.45	12.7	12.7	5.1 3.85	6.35	2.5 5	18.0	6.0	9.0	1.5	18.5 ^{*1} 17.5	16.0		2		
	TD		11.5	0.45	12.7	12.7	5.1 3.85	6.35	2.5 5	18.0	10.0	9.0	1.5	17.5	16.0		1		
	TC																	1	
	TD	5	5 to 7	0.45	12.7	12.7	5.1 3.85	6.35	2.5 5	18.0	6.0	9.0	1.5	18.5 17.5	— 16.0		2 1		
	TC		9 to 15	0.5	12.7	12.7	5.1 3.85	6.35	2.5 5	18.0	10.0	9.0	1.5	18.5 16.0	—		2 1		
	TD	6.3	5 to 7	0.45	12.7	12.7	5.1 3.85	6.35	2.5 5	18.0	6.0	9.0	1.5	17.5 16.0	—		3 1		
	TC		9 to 15	0.5	12.7	12.7	5.1 3.85	6.35	2.5 5	18.0	10.0	9.0	1.5	18.5 16.0	—		3 1		
	TD	8	5	0.45	12.7	12.7	5.1 3.85	6.35	2.5 5	18.0	6.0	9.0	1.5	17.5 16.0	—		3 1		
	TC		7	0.45	12.7	12.7	3.85	6.35	5	18.0	6.0	9.0	1.5	17.5	16.0		1		
	TD	9 to 20	9 to 20	0.6	12.7	12.7	3.85	6.35	3.5 5	18.0	10.0	9.0	1.5	20.0 16.0	—		1		
	TC																	1	
	tol.		±0.5	max.	±0.05	±1.0	±0.3	±0.7	±1.3	+0.8 -0.2	±0.5	min.	±0.5	max.	+2.0 -0		—		
	Nominal	TD	10	21	0.6	12.7	12.7	3.85	6.35	5	18.0	12.5	9.0	1.5	18.0		—		3
		TD	12.5	26	0.6	15 ^{*2}	15	5.0	7.5	5	18.0	12.5	9.0	1.5	18.0		—		3
		TE			0.6	25.4	12.7	3.85	6.35	5	18.0	12.5	9.0	1.5	18.0		—		4

* 1 : For φ4×7 (A=7, F=25), shall be 18.5^{-0.5/+0.75} (Taping code : TD) at Fig.2.

* 2 : P=15 taping is not standard. Use P=25.4 taping.

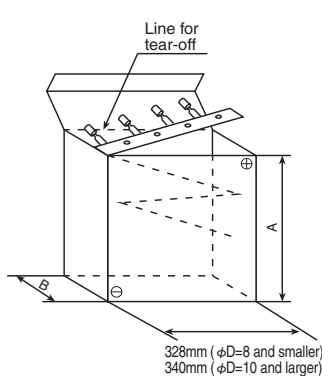
TAPING CODE

Example



QUANTITY PER AMMO PACK

Ammo pack box



Typical example

Case size φD×L(mm)	A (mm)	B (mm)	Quantity (pcs.)
φ4	L=5 & 7mm	183	42
	L=11.5mm	183	51
φ5	L=5 & 7mm	232	42
	L=9 to 15mm	232	51
φ6.3	L=17mm	235	60
	L=5 & 7mm	282	42
φ8	L=9 to 15mm	284	51
	L=17mm	284	55
φ10	L=5 & 7mm	308	42
	L=9 to 15mm	308	51
	L=17 & 20mm	308	60
	L=26 to 30mm	308	71
φ12.5	L=≤16mm	308	62
	L=17 to 25mm	308	67

*Minimum order quantity for PSG/PSK/PSF/PSE/PSC/PSA/PS series

RADIAL LEAD TYPE (CUT/FORMED LEAD)

The following lead configurations are available. When ordering, please indicate the type of lead configurations by using the appropriate supplement code, such as C5, FC, MC or RC in the product part number.

Terminal type	Size	Terminal type	Size
<p>●Lead code : FC (Forming Cut type)</p>	$\phi D=5$ to 8	<p>●Lead code : C5 (Cutting type)</p> <p>Dimension (C)</p> <ul style="list-style-type: none"> $\phi D=4$ to 8: $C=5.0 \pm 0.5$ (Second standard $C=3.5 \pm 0.5$) $\phi D=10$ to 18: $C=5.0^{+1.0}_0$ (Second standard $C=3.5 \pm 0.5$) 	$\phi D=4$ to 18
<p>●Lead code : FM (Snap-in type)</p>	$\phi D=5$ to 8	<p>●Lead code : MC (Snap-in type)</p>	$\phi D=10$ to 18
<p>●Lead code : BC (Horizontal type)</p> <p>Dimension (P)</p> <ul style="list-style-type: none"> $\phi 10, \phi 12.5$: $P=5.0 \pm 0.5$ $\phi 14.5, \phi 16, \phi 18$: $P=7.5 \pm 0.5$ 	$\phi D=10$ to 18	<p>●Lead code : RC (Snap-in type)</p>	$\phi D=20$ to 22

* Please consult with us the other terminal forming.

◆ DIMENSION (P)

[mm]

Lead forming Size	Cutting type		Snap-in type	
	FC	C5	FM	MC
$\phi 4$	—	1.5	—	—
$\phi 5$	5.0	2.0	5.0	—
$\phi 6.3$	5.0	2.5	5.0	—
$\phi 8$	5L	2.5	5.0	—
	7L min.	3.5	5.0	—
$\phi 10$	—	5.0	—	5.0
$\phi 12.5$	—	5.0	—	5.0
$\phi 14.5$	—	7.5	—	7.5
$\phi 16$	—	7.5	—	7.5
$\phi 18$	—	7.5	—	7.5

* Please refer to dimensions of each series for lead-wire diameter (ϕd).

MINIMUM ORDER QUANTITY

Please order by minimum order quantity.

◆ SURFACE MOUNT

● Vertical



Series	Size code	Quantity (pcs)	
		Taping	Tray (pcs/box)
Alchip™ MVA/MVE/MZJ MZA/MVY/MZF MZE/MZK/MLA MLF/MLE/MLK MVL/MVJ/MVH MHB/MHJ/MKB MV-BP/MVK-BP	D55, D60, D61	2,000	—
	D73	1,500	—
	E55, E60, E61, E73	1,000	—
	F46, F55, F60, F61, F73	1,000	—
	F80, H80	900	—
	F90	800	—
	H63, H70	1,000	—
	HA0	500	—
	HC0	400	—
	J80, JA0	500	—
	JC0	400	—
	KE0	200	600
	KG5	150	600
	LH0	125	400
LN0	75	400	
NPCAP™ PXK/PXS/PXF PXE/PXA/PXH	MH0	125	300
	MN0	75	300

◆ RADIAL



Size	Quantity (pcs)	
	Bagged*1	Taping
φ4	200	2,000
φ5	200	2,000
φ6.3	200 (200)*2	2,000 (2,000)*2
φ8	200 (100)*2	1,000 (1,000)*2
φ10	Height ≤ 25mm	200 (100)*2
	Height ≥ 30mm	200
φ12.5	100	500
φ14.5	50	250
φ16	50	250
φ18	50	250

*1 Standard bagged quantity.

*2 Minimum order quantity for PSG/PSK/PSF/PSE/PSC/PSA/ PS series.

◆ SNAP-IN

200 pieces

